

Product datasheet for **AP52692PU-N**

RMC1 (N-term) Rabbit Polyclonal Antibody

Product data:

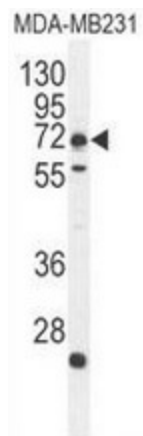
Product Type:	Primary Antibodies
Applications:	FC, IF, WB
Recommended Dilution:	This antibody is suitable for flow cytometry, immunofluorescence and Western blotting. The suggested dilution is: Flow cytometry: 1/10-1/50. Immunofluorescence: 1/10-1/50. Western blotting: 1/50-1/100.
Reactivity:	Human
Host:	Rabbit
Isotype:	Ig
Clonality:	Polyclonal
Immunogen:	Synthetic peptide - KLH conjugated - corresponding to the N-terminal region (between 40-74aa) of human C18orf8/MIC1.
Specificity:	This antibody detects human C18orf8/MIC1 at- N-term.
Formulation:	PBS with 0.09% (W/V) Sodium Azide. State: Purified State: Liquid purified Ig fraction
Concentration:	lot specific
Purification:	Purified through a protein A column; followed by peptide affinity purification.
Conjugation:	Unconjugated
Storage:	Store the antibody undiluted at 2-8°C for one month or (in aliquots) at -20°C for longer. Avoid repeated freezing and thawing.
Stability:	Shelf life: one year from despatch.
Gene Name:	chromosome 18 open reading frame 8
Database Link:	Entrez Gene 29919 Human Q96DM3
Background:	C18orf8 is an uncharacterized protein.
Synonyms:	MIC1



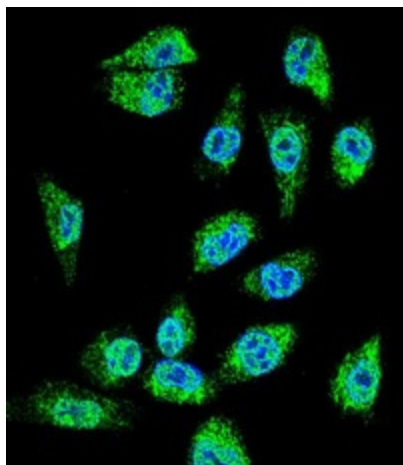
[View online »](#)

Note: **Molecular Weight:** 74975 Da

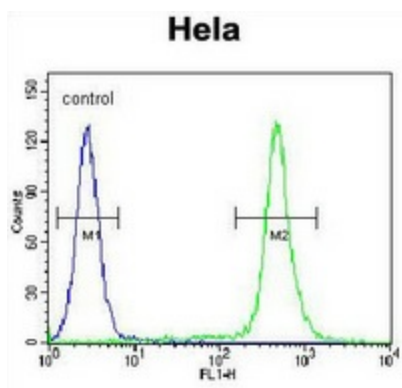
Product images:



Western blot analysis in MDA-MB231 cell line lysates (35ug/lane) using C18orf8/MIC1 antibody. (N-term). This demonstrates the antibody detected the MIC1 protein (arrow).



Confocal immunofluorescent analysis of MDA-MB231 cells using C18orf8/MIC1 antibody. (N-term), followed by Alexa Fluor 488-conjugated goat anti-rabbit IgG (green). DAPI was used to stain the cell nuclear (blue).



Flow cytometric analysis of HeLa cells (right histogram) compared to a negative control cell (left histogram) using C18orf8/MIC1 antibody. (N-term), followed by FITC-conjugated goat-anti-rabbit secondary antibodies.