

Product datasheet for **AP52691PU-N**

MIA40 (CHCHD4) (C-term) Rabbit Polyclonal Antibody

Product data:

Product Type:	Primary Antibodies
Applications:	IHC, WB
Recommended Dilution:	This antibody is suitable for immunohistochemistry on paraffin sections and Western blotting. The suggested dilution is: Immunohistochemistry on paraffin sections 1/10-1/50. Western blotting: 1/100-1/500.
Reactivity:	Human
Host:	Rabbit
Isotype:	Ig
Clonality:	Polyclonal
Immunogen:	Synthetic peptide - KLH conjugated - corresponding to the C-terminal region (between 108-137aa) of human CHCHD4 / MIA40.
Specificity:	This antibody detects CHCHD4 / MIA40.
Formulation:	PBS with 0.09% (W/V) Sodium Azide. State: Aff - Purified State: Liquid purified Ig fraction
Concentration:	lot specific
Purification:	Purified through a protein A column; followed by peptide affinity purification.
Conjugation:	Unconjugated
Storage:	Store the antibody undiluted at 2-8°C for one month or (in aliquots) at -20°C for longer. Avoid repeated freezing and thawing.
Stability:	Shelf life: one year from despatch.
Gene Name:	coiled-coil-helix-coiled-coil-helix domain containing 4
Database Link:	Entrez Gene 131474 Human Q8N4Q1



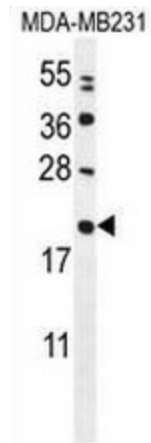
[View online »](#)

Background: CHCHD4 / MIA40, a component of human mitochondria, belongs to a protein family whose members share 6 highly conserved cysteine residues constituting a -CXC-CX(9)C-CX(9)C- motif in the C terminus (Hofmann et al., 2005 [PMID 16185709]).

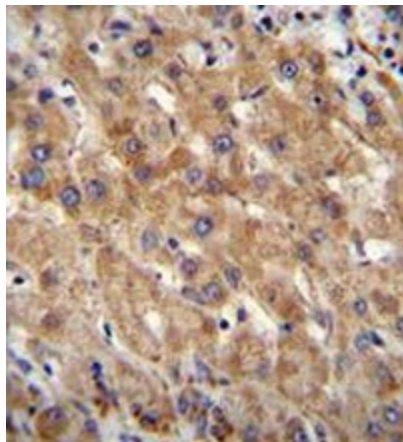
Synonyms: FLJ31709; MIA40

Note: **Molecular Weight:** 15996 Da

Product images:



Western blot analysis in MDA-MB231 cell line lysates (35ug/lane) using CHCHD4 / MIA40 antibody. This demonstrates the MIA40 antibody detected the MIA40 protein (arrow).



Immunohistochemistry analysis in human liver tissue (formalin-fixed, paraffin-embedded) using CHCHD4 / MIA40 antibody. (C-term), followed by peroxidase conjugation of the secondary antibody and DAB staining. This data demonstrates the use of MIA40 antibody for immunohistochemistry. Clinical relevance has not been evaluated.