

## Product datasheet for **AP52683PU-N**

### MFSD6 (C-term) Rabbit Polyclonal Antibody

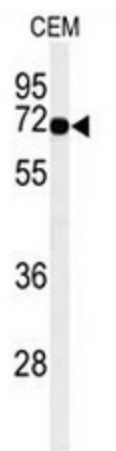
#### Product data:

Product Type:	Primary Antibodies
Applications:	WB
Recommended Dilution:	<b>ELISA:</b> 1/1000. <b>Western Blot:</b> 1/100 - 1/500.
Reactivity:	Human
Host:	Rabbit
Isotype:	Ig
Clonality:	Polyclonal
Immunogen:	KLH conjugated synthetic peptide between 663~693 amino acids from the C-terminal region of human MFSD6
Specificity:	This antibody reacts to MFSD6.
Formulation:	PBS State: Aff - Purified State: Liquid purified Ig fraction Preservative: 0,09% sodium azide
Concentration:	lot specific
Purification:	Affinity chromatography on Protein A
Conjugation:	Unconjugated
Storage:	Store the antibody undiluted at 2-8°C for one month or (in aliquots) at -20°C for longer. Avoid repeated freezing and thawing.
Stability:	Shelf life: one year from despatch.
Predicted Protein Size:	88088 Da
Gene Name:	major facilitator superfamily domain containing 6
Database Link:	<a href="#">Entrez Gene 54842 Human Q6ZSS7</a>
Synonyms:	MMR2, FLJ20160
Protein Families:	Transmembrane



[View online »](#)

## Product images:



Western blot analysis of MFSD6 Antibody (C-term) in CEM cell line lysates (35ug/lane). MFSD6 (arrow) was detected using the purified Pab.