

Product datasheet for **AP52680PU-N**

MFSD10 (Center) Rabbit Polyclonal Antibody

Product data:

Product Type:	Primary Antibodies
Applications:	WB
Recommended Dilution:	ELISA: 1/1000. Western Blot: 1/100 – 1/500.
Reactivity:	Human
Host:	Rabbit
Isotype:	Ig
Clonality:	Polyclonal
Immunogen:	KLH conjugated synthetic peptide between 252-282 amino acids from the Central region of human MFS10
Specificity:	This antibody reacts to MFS10.
Formulation:	PBS State: Aff – Purified State: Liquid purified Ig fraction Preservative: 0.09% (W/V) sodium azide
Concentration:	lot specific
Purification:	Affinity chromatography on Protein A
Conjugation:	Unconjugated
Storage:	Store the antibody undiluted at 2–8°C for one month or (in aliquots) at –20°C for longer. Avoid repeated freezing and thawing.
Stability:	Shelf life: one year from despatch.
Predicted Protein Size:	48339 Da
Gene Name:	major facilitator superfamily domain containing 10



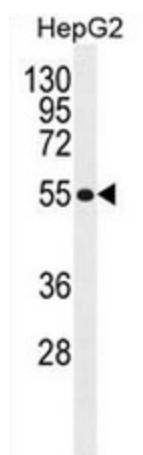
Database Link: [Entrez Gene 10227 Human Q14728](#)

Background: This gene encodes a member of the major facilitator superfamily of transporter proteins. The encoded protein likely functions in efflux of organic anions, including the non-steroidal anti-inflammatory drugs indomethacin and diclofenac. Alternatively spliced transcript variants have been described. [provided by RefSeq].

Synonyms: IT10C3; TETRAN; TETTRAN

Protein Families: Transmembrane

Product images:



MFS10 Antibody (Center) western blot analysis in HepG2 cell line lysates (35ug/lane). This demonstrates the MFS10 antibody detected the MFS10 protein (arrow).