

## Product datasheet for **AP52679PU-N**

### Mitofusin 1 (MFN1) (Center) Rabbit Polyclonal Antibody

#### Product data:

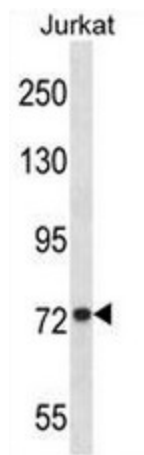
Product Type:	Primary Antibodies
Applications:	WB
Recommended Dilution:	<b>ELISA:</b> 1/1000. <b>Western Blot:</b> 1/100 - 1/500.
Reactivity:	Human
Host:	Rabbit
Isotype:	Ig
Clonality:	Polyclonal
Immunogen:	KLH conjugated synthetic peptide between 352-381 amino acids from the Central region of human MFN1
Specificity:	This antibody reacts to MFN1.
Formulation:	PBS State: Aff - Purified State: Liquid purified Ig fraction Preservative: 0.09% (W/V) sodium azide
Concentration:	lot specific
Purification:	Affinity chromatography on Protein A
Conjugation:	Unconjugated
Storage:	Store the antibody undiluted at 2-8°C for one month or (in aliquots) at -20°C for longer. Avoid repeated freezing and thawing.
Stability:	Shelf life: one year from despatch.
Predicted Protein Size:	Isoform 1: 84 kDa Isoform 3: 71 kDa
Gene Name:	mitofusin 1
Database Link:	<a href="#">Entrez Gene 55669 Human Q8IWA4</a>
Background:	The protein encoded by this gene is a mediator of mitochondrial fusion. This protein and mitofusin 2 are homologs of the Drosophila protein fuzzy onion (Fzo). They are mitochondrial membrane proteins that interact with each other to facilitate mitochondrial targeting.



[View online »](#)

Synonyms: MFN1, Transmembrane GTPase MFN1, Fzo

### Product images:



MFN1 Antibody (Center) western blot analysis in Jurkat cell line lysates (35ug/lane). This demonstrates the MFN1 antibody detected the MFN1 protein (arrow).