

Product datasheet for **AP52678PU-N**

MAGP1 (MFAP2) (N-term) Rabbit Polyclonal Antibody

Product data:

Product Type:	Primary Antibodies
Applications:	WB
Recommended Dilution:	ELISA: 1/1000. Western Blot: 1/100 - 1/500.
Reactivity:	Human
Host:	Rabbit
Isotype:	Ig
Clonality:	Polyclonal
Immunogen:	KLH conjugated synthetic peptide between 22-52 amino acids from the N-terminal region of human MFAP2
Specificity:	This antibody reacts to MFAP2.
Formulation:	PBS State: Aff - Purified State: Liquid purified Ig fraction Preservative: 0.09% (W/V) sodium azide
Concentration:	lot specific
Purification:	Affinity chromatography on Protein A
Conjugation:	Unconjugated
Storage:	Store the antibody undiluted at 2-8°C for one month or (in aliquots) at -20°C for longer. Avoid repeated freezing and thawing.
Stability:	Shelf life: one year from despatch.
Predicted Protein Size:	20826 Da
Gene Name:	microfibrillar associated protein 2
Database Link:	Entrez Gene 4237 Human P55001
Background:	Microfibrillar-associated protein 2 is a major antigen of elastin-associated microfibrils and a candidate for involvement in the etiology of inherited connective tissue diseases. Four transcript variants encoding two different isoforms have been found for this gene.

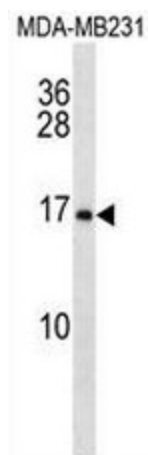


[View online »](#)

Synonyms: Microfibrillar-associated protein 2, MAGP1, MFAP-2

Protein Families: Secreted Protein

Product images:



MFAP2 Antibody (N-term) western blot analysis in MDA-MB231 cell line lysates (35ug/lane). This demonstrates the MFAP2 antibody detected the MFAP2 protein (arrow).