

Product datasheet for **AP52677PU-N**

RKHD3 (MEX3B) (N-term) Rabbit Polyclonal Antibody

Product data:

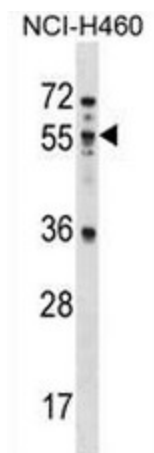
Product Type:	Primary Antibodies
Applications:	WB
Recommended Dilution:	ELISA: 1/1000. Western Blot: 1/100 - 1/500.
Reactivity:	Human
Host:	Rabbit
Isotype:	Ig
Clonality:	Polyclonal
Immunogen:	KLH conjugated synthetic peptide between 36-65 amino acids from the N-terminal region of human MEX3B
Specificity:	This antibody reacts to MEX3B.
Formulation:	PBS State: Aff - Purified State: Liquid purified Ig fraction Preservative: 0.09% (W/V) sodium azide
Concentration:	lot specific
Purification:	Affinity chromatography on Protein A
Conjugation:	Unconjugated
Storage:	Store the antibody undiluted at 2-8°C for one month or (in aliquots) at -20°C for longer. Avoid repeated freezing and thawing.
Stability:	Shelf life: one year from despatch.
Predicted Protein Size:	58832 Da
Gene Name:	mex-3 RNA binding family member B
Database Link:	Entrez Gene 84206 Human Q6ZN04
Background:	RNA-binding protein. May be involved in post-transcriptional regulatory mechanisms.
Synonyms:	KIAA2009, RING finger protein 195, RNF195



[View online »](#)

Protein Families: Druggable Genome, Transcription Factors

Product images:



MEX3B Antibody (N-term) western blot analysis in NCI-H460 cell line lysates (35ug/lane). This demonstrates the MEX3B antibody detected the MEX3B protein (arrow).