

Product datasheet for **AP52676PU-N**

METTL4 (C-term) Rabbit Polyclonal Antibody

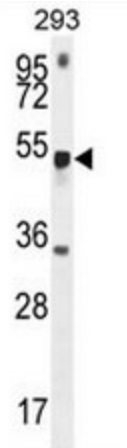
Product data:

Product Type:	Primary Antibodies
Applications:	IHC, WB
Recommended Dilution:	ELISA: 1/1000. Western Blot: 1/100 - 1/500. Immunohistochemistry on paraffin sections: 1/50 - 1/100.
Reactivity:	Human, Mouse
Host:	Rabbit
Isotype:	Ig
Clonality:	Polyclonal
Immunogen:	KLH conjugated synthetic peptide between 322-352 amino acids from the C-terminal region of human METTL4
Specificity:	This antibody reacts to METTL4.
Formulation:	PBS State: Aff - Purified State: Liquid purified Ig fraction Preservative: 0.09% (W/V) sodium azide
Concentration:	lot specific
Purification:	Affinity chromatography on Protein A
Conjugation:	Unconjugated
Storage:	Store the antibody undiluted at 2-8°C for one month or (in aliquots) at -20°C for longer. Avoid repeated freezing and thawing.
Stability:	Shelf life: one year from despatch.
Predicted Protein Size:	54041 Da
Gene Name:	methyltransferase like 4
Database Link:	Entrez Gene 76781 Mouse Entrez Gene 64863 Human Q8N3J2
Synonyms:	Methyltransferase-like protein 4

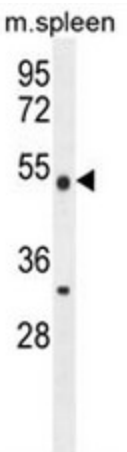


[View online »](#)

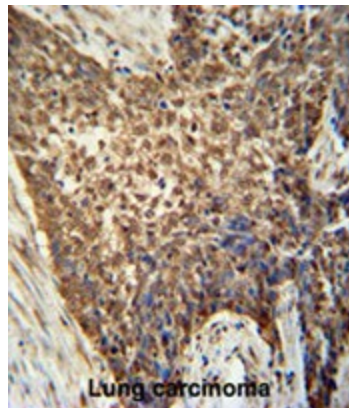
Product images:



METTL4 Antibody (C-term) western blot analysis in 293 cell line lysates (35ug/lane). This demonstrates the METTL4 antibody detected the METTL4 protein (arrow).



METTL4 Antibody (C-term) western blot analysis in mouse spleen tissue lysates (35ug/lane). This demonstrates the METTL4 antibody detected the METTL4 protein (arrow).



METTL4 antibody (C-term) immunohistochemistry analysis in formalin fixed and paraffin embedded human Lung carcinoma followed by peroxidase conjugation of the secondary antibody and DAB staining. This data demonstrates the use of the METTL4 antibody (C-term) for immunohistochemistry. Clinical relevance has not been evaluated.