

Product datasheet for **AP52674PU-N**

METTL11B (N-term) Rabbit Polyclonal Antibody

Product data:

Product Type:	Primary Antibodies
Applications:	WB
Recommended Dilution:	ELISA: 1/1000. Western Blot: 1/100 - 1/500.
Reactivity:	Human, Mouse
Host:	Rabbit
Isotype:	Ig
Clonality:	Polyclonal
Immunogen:	KLH conjugated synthetic peptide between 13-42 amino acids from the N-terminal region of human METTL11B
Specificity:	This antibody reacts to METTL11B.
Formulation:	PBS State: Aff - Purified State: Liquid purified Ig fraction Preservative: 0.09% (W/V) sodium azide
Concentration:	lot specific
Purification:	Affinity chromatography on Protein A
Conjugation:	Unconjugated
Storage:	Store the antibody undiluted at 2-8°C for one month or (in aliquots) at -20°C for longer. Avoid repeated freezing and thawing.
Stability:	Shelf life: one year from despatch.
Predicted Protein Size:	32400 Da
Gene Name:	methyltransferase like 11B
Database Link:	Entrez Gene 240879 Mouse Entrez Gene 149281 Human Q5VY1



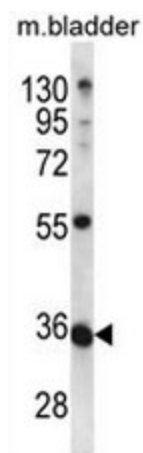
[View online »](#)

Background: METTL11B is alpha-N-methyltransferase that methylates the N-terminus of target proteins containing the N-terminal motif [Ala/Pro/Ser]-Pro-Lys when the initiator Met is cleaved. Specifically catalyzes mono-, di- or tri-methylation of exposed alpha-amino group of Ala, Pro or Ser residue in the [Ala/Pro/Ser]-Pro-Lys motif (By similarity).

Synonyms: Methyltransferase-like protein 11B, NTM1B

Protein Families: Druggable Genome

Product images:



METTL11B Antibody (N-term) western blot analysis in mouse bladder tissue lysates (35ug/lane). This demonstrates the METTL11B antibody detected the METTL11B protein (arrow).