

Product datasheet for **AP52673PU-N**

Methyltransferase like protein 10 (METTL10) (N-term) Rabbit Polyclonal Antibody

Product data:

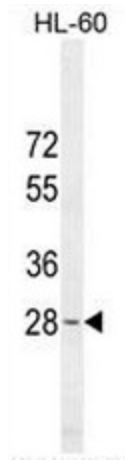
Product Type:	Primary Antibodies
Applications:	FC, IHC, WB
Recommended Dilution:	ELISA: 1/1000. Western Blot: 1/100 - 1/500. Immunohistochemistry on paraffin sections: 1/50 - 1/100. Flow Cytometry: 1/10 - 1/50.
Reactivity:	Human
Host:	Rabbit
Isotype:	Ig
Clonality:	Polyclonal
Immunogen:	KLH conjugated synthetic peptide between 36-65 amino acids from the N-terminal region of human METTL10
Specificity:	This antibody reacts to METTL10.
Formulation:	PBS State: Aff - Purified State: Liquid purified Ig fraction Preservative: 0.09% (W/V) sodium azide
Concentration:	lot specific
Purification:	Affinity chromatography on Protein A
Conjugation:	Unconjugated
Storage:	Store the antibody undiluted at 2-8°C for one month or (in aliquots) at -20°C for longer. Avoid repeated freezing and thawing.
Stability:	Shelf life: one year from despatch.
Gene Name:	methyltransferase like 10
Database Link:	Entrez Gene 399818 Human Q5JPI9
Synonyms:	Methyltransferase-like protein 10, C10orf138
Note:	Molecular Weight: 31830 Da



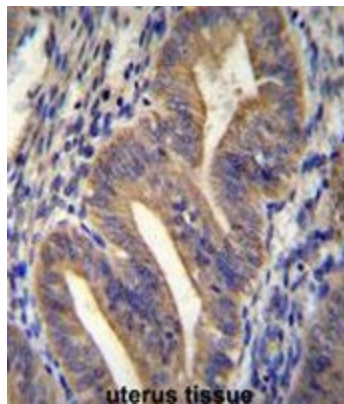
[View online »](#)

Protein Families: Druggable Genome

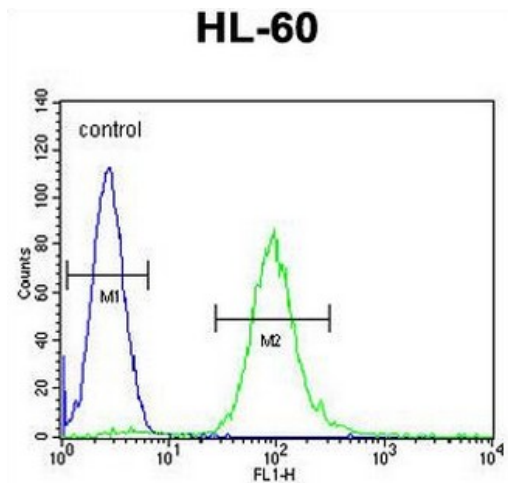
Product images:



METTL10 Antibody (N-term) western blot analysis in HL-60 cell line lysates (35ug/lane). This demonstrates the METTL10 antibody detected the METTL10 protein (arrow).



METTL10 Antibody (N-term) immunohistochemistry analysis in formalin fixed and paraffin embedded human uterus tissue followed by peroxidase conjugation of the secondary antibody and DAB staining. This data demonstrates the use of METTL10 Antibody (N-term) for immunohistochemistry. Clinical relevance has not been evaluated.



METTL10 Antibody (N-term) flow cytometric analysis of HL-60 cells (right histogram) compared to a negative control cell (left histogram). FITC-conjugated goat-anti-rabbit secondary antibodies were used for the analysis.