

## Product datasheet for **AP52672PU-N**

### **METTL1 (Center) Rabbit Polyclonal Antibody**

#### **Product data:**

Product Type:	Primary Antibodies
Applications:	WB
Recommended Dilution:	<b>ELISA:</b> 1/1000. <b>Western Blot:</b> 1/100 - 1/500.
Reactivity:	Human
Host:	Rabbit
Isotype:	Ig
Clonality:	Polyclonal
Immunogen:	KLH conjugated synthetic peptide between 154~183 amino acids from the Central region of human METTL1
Specificity:	This antibody reacts to METTL1.
Formulation:	PBS State: Aff - Purified State: Liquid purified Ig fraction Preservative: 0.09% (W/V) sodium azide
Concentration:	lot specific
Purification:	Affinity chromatography on Protein A
Conjugation:	Unconjugated
Storage:	Store the antibody undiluted at 2-8°C for one month or (in aliquots) at -20°C for longer. Avoid repeated freezing and thawing.
Stability:	Shelf life: one year from despatch.
Predicted Protein Size:	31471 Da
Gene Name:	methyltransferase like 1
Database Link:	<a href="#">Entrez Gene 4234 Human Q9UBP6</a>
Background:	This gene is similar in sequence to the <i>S. cerevisiae</i> YDL201w gene. The gene product contains a conserved S-adenosylmethionine-binding motif and is inactivated by phosphorylation.

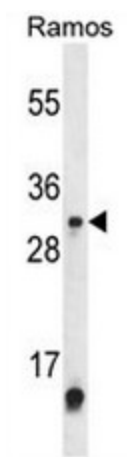


[View online »](#)

Synonyms: C12orf1, Methyltransferase-like protein 1

Protein Families: Druggable Genome

### Product images:



Western blot analysis of METTL1 Antibody (Center) in Ramos cell line lysates (35ug/lane). METTL1 (arrow) was detected using the purified Pab.