

## Product datasheet for **AP52663PU-N**

### MEIG1 (Center) Rabbit Polyclonal Antibody

#### Product data:

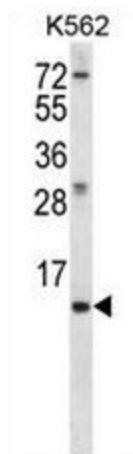
Product Type:	Primary Antibodies
Applications:	IHC, WB
Recommended Dilution:	<b>ELISA:</b> 1/1000. <b>Western Blot:</b> 1/100 - 1/500. <b>Immunohistochemistry on paraffin sections:</b> 1/10 - 1/50.
Reactivity:	Human
Host:	Rabbit
Isotype:	Ig
Clonality:	Polyclonal
Immunogen:	KLH conjugated synthetic peptide between 35-65 amino acids from the Central region of human MEIG1
Specificity:	This antibody reacts to MEIG1.
Formulation:	PBS State: Aff - Purified State: Liquid purified Ig fraction Preservative: 0.09% (W/V) sodium azide
Concentration:	lot specific
Purification:	Affinity chromatography on Protein A
Conjugation:	Unconjugated
Storage:	Store the antibody undiluted at 2-8°C for one month or (in aliquots) at -20°C for longer. Avoid repeated freezing and thawing.
Stability:	Shelf life: one year from despatch.
Predicted Protein Size:	10795 Da
Gene Name:	meiosis/spermiogenesis associated 1
Database Link:	<a href="#">Entrez Gene 644890 Human</a> <a href="#">Q5JSS6</a>
Background:	MEIG1 may be involved in germ cell differentiation (By similarity).



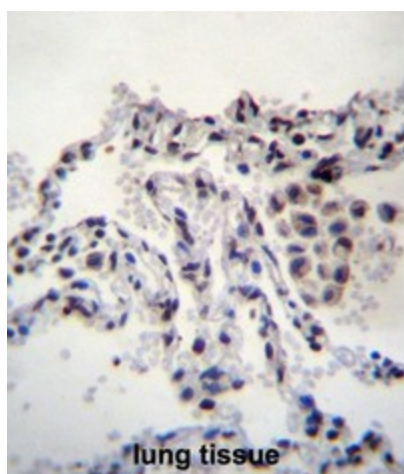
[View online »](#)

Synonyms: bA2K17.3; OTTHUMP00000019179

### Product images:



MEIG1 Antibody (Center) western blot analysis in K562 cell line lysates (35ug/lane). This demonstrates the MEIG1 antibody detected the MEIG1 protein (arrow).



MEIG1 Antibody (Center) immunohistochemistry analysis in formalin fixed and paraffin embedded human lung tissue followed by peroxidase conjugation of the secondary antibody and DAB staining. This data demonstrates the use of MEIG1 Antibody (Center) for immunohistochemistry. Clinical relevance has not been evaluated.