

## Product datasheet for **AP52662PU-N**

### MEF2D (N-term) Rabbit Polyclonal Antibody

#### Product data:

Product Type:	Primary Antibodies
Applications:	WB
Recommended Dilution:	<b>ELISA:</b> 1/1000. <b>Western Blot:</b> 1/100 - 1/500.
Reactivity:	Human
Host:	Rabbit
Isotype:	Ig
Clonality:	Polyclonal
Immunogen:	KLH conjugated synthetic peptide between 115-144 amino acids from the N-terminal region of human MEF2D
Specificity:	This antibody reacts to MEF2D.
Formulation:	PBS State: Aff - Purified State: Liquid purified Ig fraction Preservative: 0.09% (W/V) sodium azide
Concentration:	lot specific
Purification:	Affinity chromatography on Protein A
Conjugation:	Unconjugated
Storage:	Store the antibody undiluted at 2-8°C for one month or (in aliquots) at -20°C for longer. Avoid repeated freezing and thawing.
Stability:	Shelf life: one year from despatch.
Predicted Protein Size:	55938 Da
Gene Name:	myocyte enhancer factor 2D
Database Link:	<a href="#">Entrez Gene 4209 Human Q14814</a>



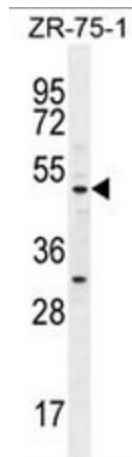
[View online »](#)

**Background:** Transcriptional activator which binds specifically to the MEF2 element, 5'-YTA[AT](4)TAR-3', found in numerous muscle-specific, growth factor-and stress-induced genes. Mediates cellular functions not only in skeletal and cardiac muscle development, but also in neuronal differentiation and survival. Plays diverse roles in the control of cell growth, survival and apoptosis via p38 MAPK signaling in muscle-specific and/or growth factor-related transcription. Plays a critical role in the regulation of neuronal apoptosis (By similarity).

**Synonyms:** Myocyte-specific enhancer factor 2D

**Protein Families:** Transcription Factors

**Product images:**



MEF2D Antibody (N-term) western blot analysis in ZR-75-1 cell line lysates (35ug/lane). This demonstrates the MEF2D antibody detected the MEF2D protein (arrow).