

Product datasheet for **AP52661PU-N**

MEF2A (Center) Rabbit Polyclonal Antibody

Product data:

Product Type:	Primary Antibodies
Applications:	IF, IHC, WB
Recommended Dilution:	ELISA: 1/1000. Western Blot: 1/100-1/500. Immunofluorescence: 1/10-1/50. Immunohistochemistry on Paraffin Sections: 1/50-1/100.
Reactivity:	Human, Mouse
Host:	Rabbit
Isotype:	Ig
Clonality:	Polyclonal
Immunogen:	KLH conjugated synthetic peptide between 459~488 amino acids from the Center region of human MEF2A
Specificity:	This antibody recognizes Human and Mouse MEF2A (Center).
Formulation:	PBS containing 0.09% (W/V) Sodium Azide as preservative State: Aff - Purified State: Liquid purified Ig fraction
Concentration:	lot specific
Purification:	Protein A column, followed by peptide affinity purification
Conjugation:	Unconjugated
Storage:	Store undiluted at 2-8°C for one month or (in aliquots) at -20°C for longer. Avoid repeated freezing and thawing.
Stability:	Shelf life: one year from despatch.
Gene Name:	myocyte enhancer factor 2A
Database Link:	Entrez Gene 17258 Mouse Entrez Gene 4205 Human Q02078



[View online »](#)

Background:

MEF2A is a DNA-binding transcription factor that activates many muscle-specific, growth factor-induced, and stress-induced genes. The encoded protein can act as a homodimer or as a heterodimer and is involved in several cellular processes, including muscle development, neuronal differentiation, cell growth control, and apoptosis. Defects in this protein could be a cause of autosomal dominant coronary artery disease 1 with myocardial infarction (ADCAD1).

Synonyms:

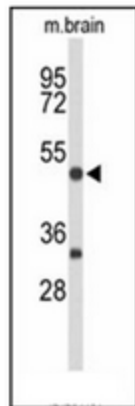
MEF2, Myocyte-specific enhancer factor 2A

Note:

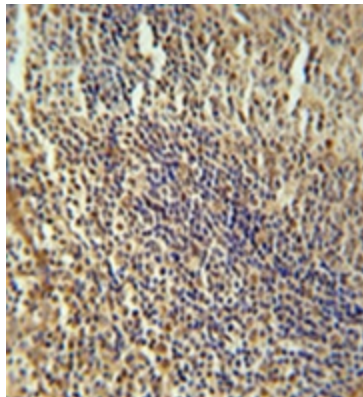
Molecular Weight: 54811 Da

Protein Families:

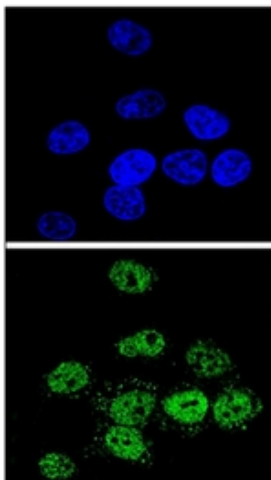
Transcription Factors

Product images:

Western blot analysis of MEF2A Antibody (Center) in mouse brain tissue lysates (35ug/lane). MEF2A (arrow) was detected using the purified Pab.



Immunohistochemistry analysis in formalin fixed and paraffin embedded human tonsil tissue reacted with MEF2A Antibody (Center), which was peroxidase conjugated to the secondary antibody and followed by DAB staining. This data demonstrates the use of the MEF2A Antibody (Center) for immunohistochemistry. Clinical relevance has not been evaluated.



Confocal immunofluorescent analysis of MEF2A Antibody (Center) with HeLa cell followed by Alexa Fluor[®]488-conjugated goat anti-rabbit IgG (green). DAPI was used to stain the cell nuclear (blue).