

Product datasheet for **AP52660PU-N**

MED8 (Center) Rabbit Polyclonal Antibody

Product data:

Product Type:	Primary Antibodies
Applications:	WB
Recommended Dilution:	ELISA: 1/1000. Western Blot: 1/100-1/500.
Reactivity:	Human
Host:	Rabbit
Isotype:	Ig
Clonality:	Polyclonal
Immunogen:	KLH conjugated synthetic peptide between 102-130 amino acids from the Central region of human MED8
Specificity:	This antibody recognizes Human MED8 (Center).
Formulation:	PBS containing 0.09% (W/V) Sodium Azide as preservative State: Aff - Purified State: Liquid purified Ig fraction
Concentration:	lot specific
Purification:	Protein A column, followed by peptide affinity purification
Conjugation:	Unconjugated
Storage:	Store undiluted at 2-8°C for one month or (in aliquots) at -20°C for longer. Avoid repeated freezing and thawing.
Stability:	Shelf life: one year from despatch.
Gene Name:	mediator complex subunit 8
Database Link:	Entrez Gene 112950 Human Q96G25
Background:	This gene encodes a protein that is one of more than 20 subunits of the mediator complex, first identified in <i>S. cerevisiae</i> , that is required for activation of transcription. The product of this gene also interacts with elongins B and C, and CUL2 and RBX1, to reconstitute a ubiquitin ligase. Two alternative transcripts encoding different isoforms have been described.
Synonyms:	Mediator complex 8

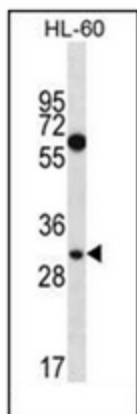


[View online »](#)

Note: **Molecular Weight:** 29080 Da

Protein Families: Druggable Genome, Transcription Factors

Product images:



Western blot analysis of MED8 Antibody (Center) in HL-60 cell line lysates (35ug/lane). This demonstrates the MED8 antibody detected the MED8 protein (arrow).