

## Product datasheet for **AP52658PU-N**

### **MED6 (C-term) Rabbit Polyclonal Antibody**

#### **Product data:**

Product Type:	Primary Antibodies
Applications:	WB
Recommended Dilution:	<b>ELISA:</b> 1/1000. <b>Western Blot:</b> 1/100-1/500.
Reactivity:	Human
Host:	Rabbit
Isotype:	Ig
Clonality:	Polyclonal
Immunogen:	KLH conjugated synthetic peptide between 214-246 amino acids from the C-terminal region of human MED6
Specificity:	This antibody recognizes Human MED6 (C-term).
Formulation:	PBS containing 0.09% (W/V) Sodium Azide as preservative State: Aff - Purified State: Liquid purified Ig fraction
Concentration:	lot specific
Purification:	Protein A column, followed by peptide affinity purification
Conjugation:	Unconjugated
Storage:	Store undiluted at 2-8°C for one month or (in aliquots) at -20°C for longer. Avoid repeated freezing and thawing.
Stability:	Shelf life: one year from despatch.
Gene Name:	mediator complex subunit 6
Database Link:	<a href="#">Entrez Gene 10001 Human O75586</a>



[View online »](#)

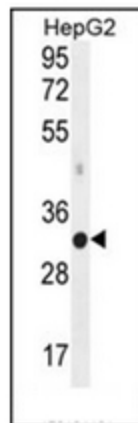
**Background:** Component of the Mediator complex, a coactivator involved in the regulated transcription of nearly all RNA polymerase II-dependent genes. Mediator functions as a bridge to convey information from gene-specific regulatory proteins to the basal RNA polymerase II transcription machinery. Mediator is recruited to promoters by direct interactions with regulatory proteins and serves as a scaffold for the assembly of a functional preinitiation complex with RNA polymerase II and the general transcription factors.

**Synonyms:** Mediator complex 6, ARC33

**Note:** **Molecular Weight:** 28425 Da

**Protein Families:** Druggable Genome, Transcription Factors

**Product images:**



Western blot analysis of MED6 Antibody (C-term) in HepG2 cell line lysates (35ug/lane). This demonstrates the MED6 antibody detected the MED6 protein (arrow).