

## Product datasheet for **AP52654PU-N**

### CRSP7 (MED26) (Center) Rabbit Polyclonal Antibody

#### Product data:

Product Type:	Primary Antibodies
Applications:	WB
Recommended Dilution:	<b>ELISA:</b> 1/1000. <b>Western Blot:</b> 1/100-1/500.
Reactivity:	Human
Host:	Rabbit
Isotype:	Ig
Clonality:	Polyclonal
Immunogen:	KLH conjugated synthetic peptide between 190-220 amino acids from the Central region of human MED26
Specificity:	This antibody recognizes Human MED26 (Center).
Formulation:	PBS containing 0.09% (W/V) Sodium Azide as preservative State: Aff - Purified State: Liquid purified Ig fraction
Concentration:	lot specific
Purification:	Protein A column, followed by peptide affinity purification
Conjugation:	Unconjugated
Storage:	Store undiluted at 2-8°C for one month or (in aliquots) at -20°C for longer. Avoid repeated freezing and thawing.
Stability:	Shelf life: one year from despatch.
Gene Name:	mediator complex subunit 26
Database Link:	<a href="#">Entrez Gene 9441 Human O95402</a>



[View online »](#)

**Background:**

The activation of gene transcription is a multistep process that is triggered by factors that recognize transcriptional enhancer sites in DNA. These factors work with co-activators to direct transcriptional initiation by the RNA polymerase II apparatus. The protein encoded by this gene is a subunit of the CRSP (cofactor required for SP1 activation) complex, which, along with TFIID, is required for efficient activation by SP1. This protein is also a component of other multisubunit complexes e.g. thyroid hormone receptor-(TR-) associated proteins which interact with TR and facilitate TR function on DNA templates in conjunction with initiation factors and cofactors.

**Synonyms:**

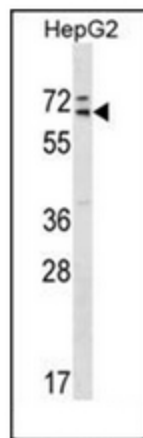
ARC70, CRSP7, Mediator complex 26, CRSP complex subunit 7

**Note:**

**Molecular Weight:** 65446 Da

**Protein Families:**

Druggable Genome

**Product images:**

Western blot analysis of MED26 Antibody (Center) in HepG2 cell line lysates (35ug/lane). This demonstrates the MED26 antibody detected the MED26 protein (arrow).