

Product datasheet for **AP52653PU-N**

MED25 (N-term) Rabbit Polyclonal Antibody

Product data:

Product Type:	Primary Antibodies
Applications:	IHC, WB
Recommended Dilution:	ELISA: 1/1000. Western Blot: 1/100-1/500. Immunohistochemistry on Paraffin Sections: 1/10-1/50.
Reactivity:	Human, Mouse
Host:	Rabbit
Isotype:	Ig
Clonality:	Polyclonal
Immunogen:	KLH conjugated synthetic peptide between 119-148 amino acids from the N-terminal region of human MED25.
Specificity:	This antibody recognizes Human and Mouse MED25 (N-term).
Formulation:	PBS containing 0.09% (W/V) Sodium Azide as preservative State: Aff - Purified State: Liquid purified Ig fraction
Concentration:	lot specific
Purification:	Protein A column, followed by peptide affinity purification
Conjugation:	Unconjugated
Storage:	Store undiluted at 2-8°C for one month or (in aliquots) at -20°C for longer. Avoid repeated freezing and thawing.
Stability:	Shelf life: one year from despatch.
Gene Name:	mediator complex subunit 25
Database Link:	Entrez Gene 75613 Mouse Entrez Gene 81857 Human Q71SY5



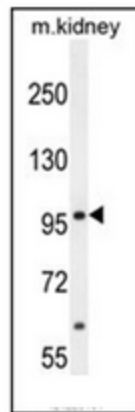
[View online »](#)

Background: This gene encodes a component of the transcriptional coactivator complex termed the Mediator complex. This complex is required for transcription of most RNA polymerase II-dependent genes. The encoded protein plays a role in chromatin modification and in preinitiation complex assembly. Mutations in this gene are associated with Charcot-Marie-Tooth disease type 2B2. [provided by RefSeq].

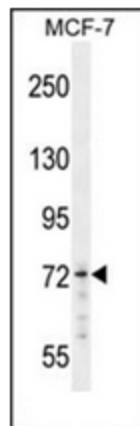
Synonyms: ACID1, ARC92, PTOV2, Activator interaction domain-containing protein 1, Activator-recruited cofactor 92 kDa component, ARC92, Mediator complex subunit 25, p78

Note: **Molecular Weight:** 78171 Da

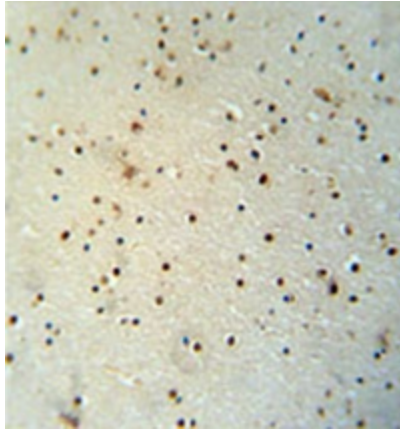
Product images:



Western blot analysis of MED25 Antibody (N-term) in mouse kidney tissue lysates (35ug/lane). This demonstrates the MED25 antibody detected the MED25 protein (arrow).



Western blot analysis of MED25 Antibody (N-term) in MCF-7 cell line lysates (35ug/lane). This demonstrates the MED25 antibody detected the MED25 protein (arrow).



Immunohistochemistry analysis in formalin fixed and paraffin embedded human brain tissue reacted with MED25 Antibody (N-term), which was peroxidase conjugated to the secondary antibody and followed by DAB staining. This data demonstrates the use of the MED25 antibody (N-term) for immunohistochemistry. Clinical relevance has not been evaluated.