

## Product datasheet for **AP52652PU-N**

### **SURF5 (MED22) (N-term) Rabbit Polyclonal Antibody**

#### **Product data:**

<b>Product Type:</b>	Primary Antibodies
<b>Applications:</b>	WB
<b>Recommended Dilution:</b>	<b>ELISA:</b> 1/1000. <b>Western Blot:</b> 1/100-1/500.
<b>Reactivity:</b>	Human
<b>Host:</b>	Rabbit
<b>Isotype:</b>	Ig
<b>Clonality:</b>	Polyclonal
<b>Immunogen:</b>	KLH conjugated synthetic peptide between 7-36 amino acids from the N-terminal region of Human MED22 / SURF5
<b>Specificity:</b>	This antibody recognizes Human MED22 / SURF5 (N-term).
<b>Formulation:</b>	PBS containing 0.09% (W/V) Sodium Azide as preservative State: Aff - Purified State: Liquid purified Ig fraction
<b>Concentration:</b>	lot specific
<b>Purification:</b>	Protein A column, followed by peptide affinity purification
<b>Conjugation:</b>	Unconjugated
<b>Storage:</b>	Store undiluted at 2-8°C for one month or (in aliquots) at -20°C for longer. Avoid repeated freezing and thawing.
<b>Stability:</b>	Shelf life: one year from despatch.
<b>Gene Name:</b>	mediator complex subunit 22
<b>Database Link:</b>	<a href="#">Entrez Gene 6837 Human Q15528</a>
<b>Background:</b>	This gene is located in the surfeit gene cluster, a group of very tightly linked housekeeping genes that do not share sequence similarity. The gene is oriented in a head-to-head fashion with RPL7A (SURF3) and the two genes share a bidirectional promoter. The encoded proteins are localized to the cytoplasm. Two alternative transcript variants encoding different isoforms have been identified for this gene.

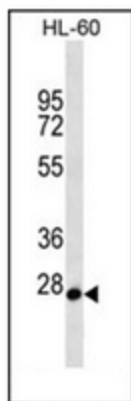


[View online »](#)

Synonyms: Surf-5

Note: **Molecular Weight:** 22221 Da

**Product images:**



Western blot analysis of MED22 / SURF5 Antibody (N-term) in HL-60 cell line lysates (35ug/lane). This demonstrates the MED22 antibody detected the MED22 protein (arrow).