

Product datasheet for **AP52650PU-N**

THRAP5 (MED16) (Center) Rabbit Polyclonal Antibody

Product data:

Product Type:	Primary Antibodies
Applications:	WB
Recommended Dilution:	ELISA: 1/1000. Western Blot: 1/100-1/500.
Reactivity:	Human
Host:	Rabbit
Isotype:	Ig
Clonality:	Polyclonal
Immunogen:	KLH conjugated synthetic peptide between 252-281 amino acids from the Central region of human MED16
Specificity:	This antibody recognizes Human MED16 (Center).
Formulation:	PBS containing 0.09% (W/V) Sodium Azide as preservative State: Aff - Purified State: Liquid purified Ig fraction
Concentration:	lot specific
Purification:	Protein A column, followed by peptide affinity purification
Conjugation:	Unconjugated
Storage:	Store undiluted at 2-8°C for one month or (in aliquots) at -20°C for longer. Avoid repeated freezing and thawing.
Stability:	Shelf life: one year from despatch.
Gene Name:	mediator complex subunit 16
Database Link:	Entrez Gene 10025 Human Q9Y2X0



[View online »](#)

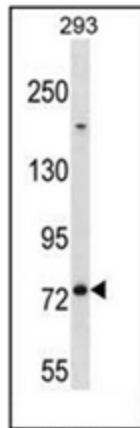
Background: Component of the Mediator complex, a coactivator involved in the regulated transcription of nearly all RNA polymerase II-dependent genes. Mediator functions as a bridge to convey information from gene-specific regulatory proteins to the basal RNA polymerase II transcription machinery. Mediator is recruited to promoters by direct interactions with regulatory proteins and serves as a scaffold for the assembly of a functional preinitiation complex with RNA polymerase II and the general transcription factors.

Synonyms: DRIP92, THRAP5, Mediator complex subunit 16

Note: **Molecular Weight:** 72kd Isoform 5. 96793 Da

Protein Families: Druggable Genome, Transcription Factors

Product images:



Western blot analysis of MED16 Antibody (Center) in 293 cell line lysates (35ug/lane). This demonstrates the MED16 antibody detected the MED16 protein (arrow).