

Product datasheet for **AP52649PU-N**

MED14 (Center) Rabbit Polyclonal Antibody

Product data:

Product Type:	Primary Antibodies
Applications:	WB
Recommended Dilution:	ELISA: 1/1000. Western Blot: 1/100-1/500.
Reactivity:	Human, Mouse
Host:	Rabbit
Isotype:	Ig
Clonality:	Polyclonal
Immunogen:	KLH conjugated synthetic peptide between 585-615 amino acids from the Central region of human MED14
Specificity:	This antibody recognizes Human and Mouse MED14 (Center).
Formulation:	PBS containing 0.09% (W/V) Sodium Azide as preservative State: Aff - Purified State: Liquid purified Ig fraction
Concentration:	lot specific
Purification:	Protein A column, followed by peptide affinity purification
Conjugation:	Unconjugated
Storage:	Store undiluted at 2-8°C for one month or (in aliquots) at -20°C for longer. Avoid repeated freezing and thawing.
Stability:	Shelf life: one year from despatch.
Gene Name:	mediator complex subunit 14
Database Link:	Entrez Gene 26896 Mouse Entrez Gene 9282 Human O60244



[View online »](#)

Background:

The activation of gene transcription is a multistep process that is triggered by factors that recognize transcriptional enhancer sites in DNA. These factors work with co-activators to direct transcriptional initiation by the RNA polymerase II apparatus. The protein encoded by this gene is a subunit of the CRSP (cofactor required for SP1 activation) complex, which, along with TFIID, is required for efficient activation by SP1. This protein is also a component of other multisubunit complexes e.g. thyroid hormone receptor-(TR-) associated proteins which interact with TR and facilitate TR function on DNA templates in conjunction with initiation factors and cofactors. This protein contains a bipartite nuclear localization signal. This gene is known to escape chromosome X-inactivation.

Synonyms:

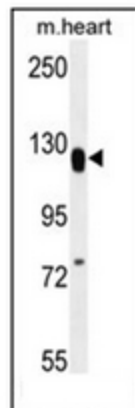
ARC150, CRSP2, CXorf4, DRIP150, EXLM1, RGR1, TRAP170 Mediator complex 14

Note:

Molecular Weight: 160607 Da

Protein Families:

Druggable Genome, Transcription Factors

Product images:

Western blot analysis of MED14 Antibody (Center) in mouse heart tissue lysates (35ug/lane). This demonstrates the MED14 antibody detected the MED14 protein (arrow).