

Product datasheet for **AP52645PU-N**

EVI1 (MECOM) (Center) Rabbit Polyclonal Antibody

Product data:

Product Type:	Primary Antibodies
Applications:	WB
Recommended Dilution:	ELISA: 1/1000. Western Blot: 1/100-1/500.
Reactivity:	Human, Mouse
Host:	Rabbit
Isotype:	Ig
Clonality:	Polyclonal
Immunogen:	KLH conjugated synthetic peptide between 80-109 amino acids from the Central region of human MDS1
Specificity:	This antibody recognizes Human and Mouse MDS1 (Center).
Formulation:	PBS containing 0.09% (W/V) Sodium Azide as preservative State: Aff - Purified State: Liquid purified Ig fraction
Concentration:	lot specific
Purification:	Protein A column, followed by peptide affinity purification
Conjugation:	Unconjugated
Storage:	Store undiluted at 2-8°C for one month or (in aliquots) at -20°C for longer. Avoid repeated freezing and thawing.
Stability:	Shelf life: one year from despatch.
Gene Name:	MDS1 and EVI1 complex locus
Database Link:	Entrez Gene 14013 Mouse Entrez Gene 2122 Human Q03112



[View online »](#)

Background:

MDS1 is located at 3q26 170-400 kb upstream (telomeric) of EVI1 in the chromosomal region in which some of the breakpoints 5' of EVI1 have been mapped. MDS1 has been identified as a single gene as well as a previously unreported exon (s) of EVI1. MDS1 exists in normal tissues both as a unique transcript and as a normal fusion transcript with EVI1, with an additional 188 codons at the 5' end of the previously reported EVI1 open reading frame. In cells with translocation t(3;21), additional fusion transcripts are AML1-MDS1 and AML1-MDS1-EVI1. EVI1 and MDS1 are involved in leukemia associated with chromosomal translocation breakpoints in the region between these genes.

Synonyms:

Myelodysplasia syndrome 1

Note:

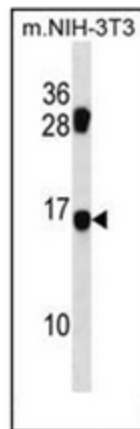
Molecular Weight: 18696 Da

Protein Families:

Druggable Genome, Transcription Factors

Protein Pathways:

Chronic myeloid leukemia, MAPK signaling pathway, Pathways in cancer

Product images:

Western blot analysis of MDS1 Antibody (Center) in mouse NIH-3T3 cell line lysates (35ug/lane). This demonstrates the MDS1 antibody detected the MDS1 protein (arrow).