

Product datasheet for **AP52637PU-N**

MCM2 (C-term) Rabbit Polyclonal Antibody

Product data:

Product Type:	Primary Antibodies
Applications:	IHC, WB
Recommended Dilution:	ELISA: 1/1000. Western Blot: 1/100-1/500. Immunohistochemistry on Paraffin Sections: 1/50-1/100.
Reactivity:	Human
Host:	Rabbit
Isotype:	Ig
Clonality:	Polyclonal
Immunogen:	KLH conjugated synthetic peptide between 656~685 amino acids from the C-terminal region of human MCM2
Specificity:	This antibody recognizes Human MCM2 (C-term).
Formulation:	PBS containing 0.09% (W/V) Sodium Azide as preservative State: Aff - Purified State: Liquid purified Ig fraction
Concentration:	lot specific
Purification:	Protein A column, followed by peptide affinity purification
Conjugation:	Unconjugated
Storage:	Store undiluted at 2-8°C for one month or (in aliquots) at -20°C for longer. Avoid repeated freezing and thawing.
Stability:	Shelf life: one year from despatch.
Gene Name:	minichromosome maintenance complex component 2
Database Link:	Entrez Gene 4171 Human P49736



[View online »](#)

Background:

MCM2 is one of the highly conserved mini-chromosome maintenance proteins (MCM) that are involved in the initiation of eukaryotic genome replication. The hexameric protein complex formed by MCM proteins is a key component of the pre-replication complex (pre_RC) and may be involved in the formation of replication forks and in the recruitment of other DNA replication related proteins. This protein forms a complex with MCM4, 6, and 7, and has been shown to regulate the helicase activity of the complex. This protein is phosphorylated, and thus regulated by, protein kinases CDC2 and CDC7.

Synonyms:

BM28, CCNL1, CDCL1, Nuclear protein BM28

Note:

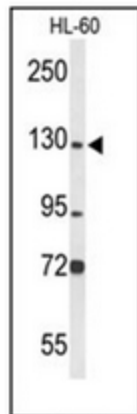
Molecular Weight: 101896 Da

Protein Families:

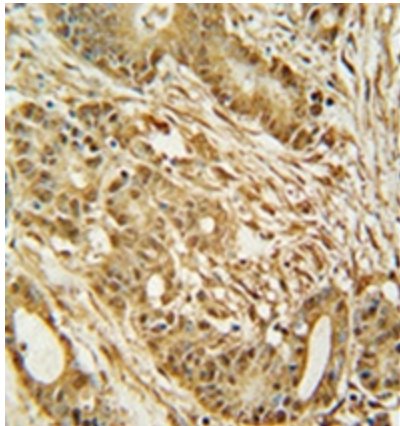
Druggable Genome, Stem cell - Pluripotency, Transcription Factors

Protein Pathways:

Cell cycle, DNA replication

Product images:

Western blot analysis of MCM2 Antibody (C-term) in HL-60 cell line lysates (35ug/lane). MCM2 (arrow) was detected using the purified Pab.



Immunohistochemistry analysis in formalin fixed and paraffin embedded human colon carcinoma reacted with MCM2 Antibody (C-term), which was peroxidase conjugated to the secondary antibody and followed by DAB staining. This data demonstrates the use of the MCM2 Antibody (C-term) for immunohistochemistry. Clinical relevance has not been evaluated.