

## Product datasheet for **AP52635PU-N**

### **MCHR (MCHR1) (C-term) Rabbit Polyclonal Antibody**

#### **Product data:**

Product Type:	Primary Antibodies
Applications:	FC, IHC, WB
Recommended Dilution:	<b>Peptide ELISA:</b> 1/1000. <b>Western Blot:</b> 1/1000. <b>Flow Cytometry:</b> 1/10-1/50. <b>Immunohistochemistry on Paraffin Sections:</b> 1/50-1/100.
Reactivity:	Human
Host:	Rabbit
Isotype:	Ig
Clonality:	Polyclonal
Immunogen:	KLH conjugated synthetic peptide between 396-422 amino acids from the C-terminal region of Human MCHR1 / GPR24
Specificity:	This antibody recognizes Human MCHR1 / GPR24 (C-term).
Formulation:	PBS containing 0.09% (W/V) Sodium Azide as preservative State: Aff - Purified State: Liquid purified Ig fraction
Concentration:	lot specific
Purification:	Protein A column, followed by peptide affinity purification
Conjugation:	Unconjugated
Storage:	Store undiluted at 2-8°C for one month or (in aliquots) at -20°C for longer. Avoid repeated freezing and thawing.
Stability:	Shelf life: one year from despatch.
Gene Name:	melanin concentrating hormone receptor 1
Database Link:	<a href="#">Entrez Gene 2847 Human Q99705</a>



[View online »](#)

**Background:** The protein encoded by this gene, a member of the G protein-coupled receptor family 1, is an integral plasma membrane protein which binds melanin-concentrating hormone. The encoded protein can inhibit cAMP accumulation and stimulate intracellular calcium flux, and is probably involved in the neuronal regulation of food consumption. Although structurally similar to somatostatin receptors, this protein does not seem to bind somatostatin.

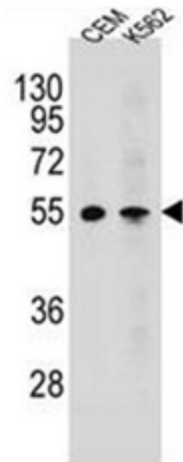
**Synonyms:** SLC1, MCH receptor 1, MCHR-1, MCH-R1, G-protein coupled receptor 24

**Note:** **Molecular Weight:** 45963 Da

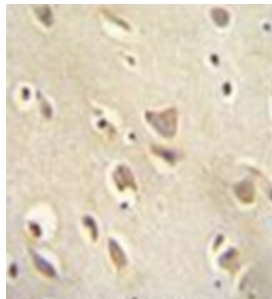
**Protein Families:** Druggable Genome, GPCR, Transmembrane

**Protein Pathways:** Neuroactive ligand-receptor interaction

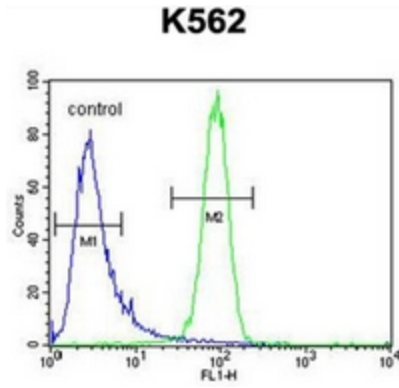
### Product images:



Western blot analysis of MCHR1 / GPR24 Antibody (C-term) in CEM, K562 cell line lysates (35ug/lane). This demonstrates the MCHR1 antibody detected the MCHR1 protein (arrow).



Immunohistochemistry analysis in formalin fixed and paraffin embedded human brain tissue reacted with MCHR1 / GPR24 Antibody (C-term), which was peroxidase conjugated to the secondary antibody and followed by DAB staining.



Flow cytometric analysis of K562 cells using MCHR1 / GPR24 Antibody (C-term) (right histogram) compared to a negative control cell (left histogram). FITC-conjugated goat-anti-rabbit secondary antibodies were used for the analysis.