

Product datasheet for **AP52634PU-N**

MCF2 (C-term) Rabbit Polyclonal Antibody

Product data:

Product Type:	Primary Antibodies
Applications:	FC, IHC, WB
Recommended Dilution:	ELISA: 1/1000. Western Blot: 1/100-1/500. Flow Cytometry: 1/10-1/50. Immunohistochemistry on Paraffin Sections: 1/10-1/50.
Reactivity:	Human
Host:	Rabbit
Isotype:	Ig
Clonality:	Polyclonal
Immunogen:	KLH conjugated synthetic peptide between 803-833 amino acids from the C-terminal region of Human MCF2
Specificity:	This antibody recognizes Human MCF2 (C-term).
Formulation:	PBS containing 0.09% (W/V) Sodium Azide as preservative State: Aff - Purified State: Liquid purified Ig fraction
Concentration:	lot specific
Purification:	Protein A column, followed by peptide affinity purification
Conjugation:	Unconjugated
Storage:	Store undiluted at 2-8°C for one month or (in aliquots) at -20°C for longer. Avoid repeated freezing and thawing.
Stability:	Shelf life: one year from despatch.
Gene Name:	MCF.2 cell line derived transforming sequence
Database Link:	Entrez Gene 4168 Human P10911



[View online »](#)

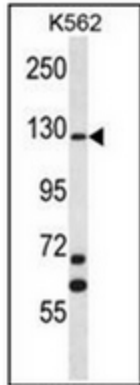
Background: The oncogenic protein encoded by this gene is a guanine nucleotide exchange factor (GEF) that exerts control over some members of the Rho family of small GTPases. Several transcript variants encoding different isoforms have been found for this gene. These isoforms exhibit different expression patterns and varying levels of GEF activity.

Synonyms: Proto-oncogene DBL, DBL

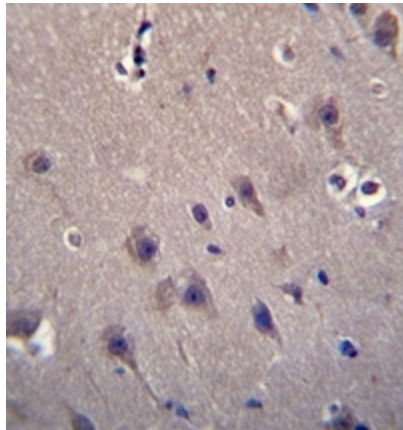
Note: **Molecular Weight:** 107673 Da

Protein Families: Druggable Genome

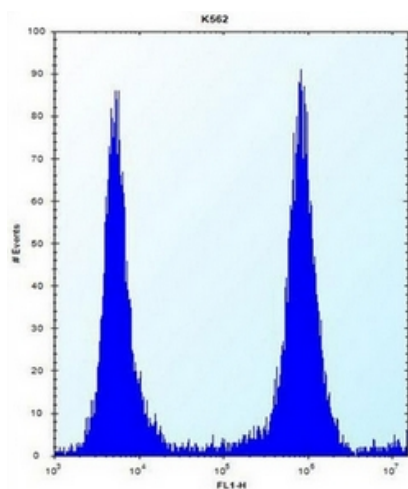
Product images:



Western blot analysis of MCF2 Antibody (C-term) in K562 cell line lysates (35ug/lane). This demonstrates the MCF2 antibody detected the MCF2 protein (arrow).



Immunohistochemistry analysis in formalin fixed and paraffin embedded human brain tissue reacted with MCF2 Antibody (C-term), which was peroxidase conjugated to the secondary antibody and followed by DAB staining.



Flow cytometric analysis of K562 cells using MCF2 Antibody (C-term) (right histogram) compared to a negative control cell (left histogram). FITC-conjugated donkey-anti-rabbit secondary antibodies were used for the analysis.