

Product datasheet for **AP52633PU-N**

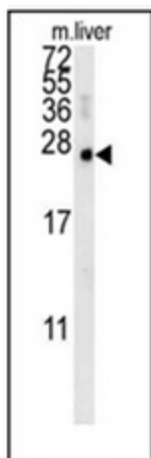
MCEE (C-term) Rabbit Polyclonal Antibody

Product data:

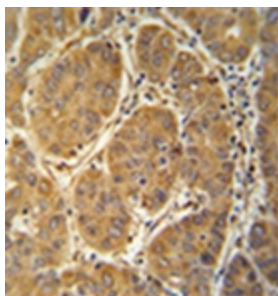
Product Type:	Primary Antibodies
Applications:	IHC, WB
Recommended Dilution:	ELISA: 1/1000. Western Blot: 1/100-1/500. Immunohistochemistry on Paraffin Sections: 1/50-1/100.
Reactivity:	Human, Mouse
Host:	Rabbit
Isotype:	Ig
Clonality:	Polyclonal
Immunogen:	KLH conjugated synthetic peptide between 135-164 amino acids from the C-terminal region of Human MCEE
Specificity:	This antibody recognizes Human and Mouse MCEE (C-term).
Formulation:	PBS containing 0.09% (W/V) Sodium Azide as preservative State: Aff - Purified State: Liquid purified Ig fraction
Concentration:	lot specific
Purification:	Protein A column, followed by peptide affinity purification
Conjugation:	Unconjugated
Storage:	Store undiluted at 2-8°C for one month or (in aliquots) at -20°C for longer. Avoid repeated freezing and thawing.
Stability:	Shelf life: one year from despatch.
Gene Name:	methylmalonyl-CoA epimerase
Database Link:	Entrez Gene 73724 Mouse Entrez Gene 84693 Human Q96PE7
Synonyms:	mitochondrial Methylmalonyl-CoA epimerase
Note:	Molecular Weight: 18749 Da
Protein Pathways:	Metabolic pathways, Propanoate metabolism, Valine, leucine and isoleucine degradation



[View online »](#)

Product images:

Western blot analysis of MCEE Antibody (C-term) in mouse liver tissue lysates (15ug/lane). This demonstrates the MCEE antibody detected MCEE protein (arrow).



Immunohistochemistry analysis in formalin fixed and paraffin embedded human hepatocarcinoma reacted with MCEE Antibody (C-term), which peroxidase conjugated to the secondary antibody and followed by DAB staining.