

## Product datasheet for **AP52630PU-N**

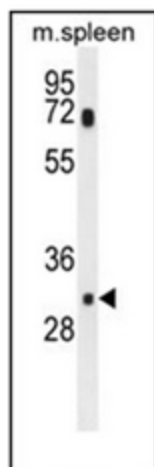
### **MCART1 (SLC25A51) (N-term) Rabbit Polyclonal Antibody**

#### **Product data:**

Product Type:	Primary Antibodies
Applications:	WB
Recommended Dilution:	<b>ELISA:</b> 1/1000. <b>Western Blot:</b> 1/100-1/500.
Reactivity:	Human, Mouse
Host:	Rabbit
Isotype:	Ig
Clonality:	Polyclonal
Immunogen:	KLH conjugated synthetic peptide between 49-79 amino acids from the N-terminal region of human MCART1
Specificity:	This antibody recognizes Human and Mouse MCART1 (N-term).
Formulation:	PBS containing 0.09% (W/V) Sodium Azide as preservative State: Aff - Purified State: Liquid purified Ig fraction
Concentration:	lot specific
Purification:	Protein A column, followed by peptide affinity purification
Conjugation:	Unconjugated
Storage:	Store undiluted at 2-8°C for one month or (in aliquots) at -20°C for longer. Avoid repeated freezing and thawing.
Stability:	Shelf life: one year from despatch.
Gene Name:	solute carrier family 25 member 51
Database Link:	<a href="#">Entrez Gene 92014 Human Q9H1U9</a>
Synonyms:	Mitochondrial carrier triple repeat protein 1
Note:	<b>Molecular Weight:</b> 33672 Da



[View online »](#)

**Product images:**

Western blot analysis of MCART1 Antibody (N-term) in mouse spleen tissue lysates (35ug/lane). This demonstrates the MCAR1 antibody detected the MCAR1 protein (arrow).