

## Product datasheet for **AP52629PU-N**

### **MCAF2 (ATF7IP2) (Center) Rabbit Polyclonal Antibody**

#### **Product data:**

Product Type:	Primary Antibodies
Applications:	FC, IHC, WB
Recommended Dilution:	<b>ELISA:</b> 1/1000. <b>Western Blot:</b> 1/100-1/500. <b>Flow Cytometry:</b> 1/10-1/50. <b>Immunohistochemistry on Paraffin Sections:</b> 1/50-1/100.
Reactivity:	Human, Mouse
Host:	Rabbit
Isotype:	Ig
Clonality:	Polyclonal
Immunogen:	KLH conjugated synthetic peptide between 325-355 amino acids from the Central region of human MCAF2
Specificity:	This antibody recognizes Human and Mouse MCAF2 (Center).
Formulation:	PBS containing 0.09% (W/V) Sodium Azide as preservative State: Aff - Purified State: Liquid purified Ig fraction
Concentration:	lot specific
Purification:	Protein A column, followed by peptide affinity purification
Conjugation:	Unconjugated
Storage:	Store undiluted at 2-8°C for one month or (in aliquots) at -20°C for longer. Avoid repeated freezing and thawing.
Stability:	Shelf life: one year from despatch.
Gene Name:	activating transcription factor 7 interacting protein 2
Database Link:	<a href="#">Entrez Gene 80063 Human</a> <a href="#">Q5U623</a>



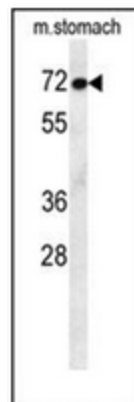
[View online »](#)

**Background:** Recruiter that couples transcriptional factors to general transcription apparatus and thereby modulates transcription regulation and chromatin formation. Can both act as an activator or a repressor depending on the context. Mediates MBD1-dependent transcriptional repression, probably by recruiting complexes containing SETDB1. The complex formed with MBD1 and SETDB1 represses transcription and probably couples DNA methylation and histone 'Lys-9' trimethylation activity (Probable).

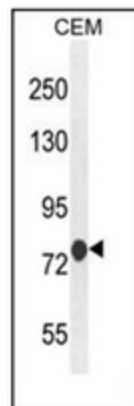
**Synonyms:** Activating transcription factor 7-interacting protein 2, MCAF2, MBD1-containing chromatin-associated factor 2

**Note:** **Molecular Weight:** 75764 Da

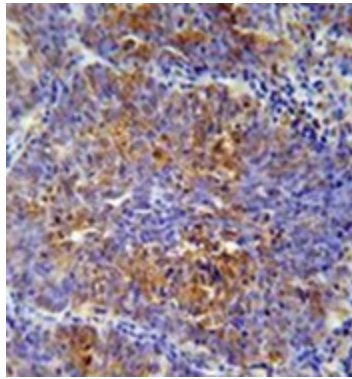
### Product images:



Western blot analysis of MCAF2 Antibody (Center) in mouse stomach tissue lysates (35ug/lane). This demonstrates the MCAF2 antibody detected the MCAF2 protein (arrow).

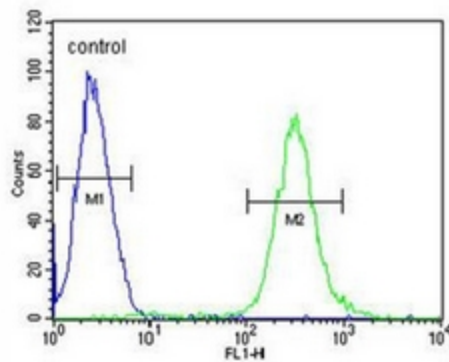


Western blot analysis of in CEM cell line lysates (35ug/lane). This demonstrates the MCAF2 antibody detected the MCAF2 protein (arrow).



Immunohistochemistry analysis in formalin fixed and paraffin embedded human lung carcinoma reacted with MCAF2 Antibody (Center) peroxidase conjugated to the secondary antibody and followed by DAB staining. This data demonstrates the use of the MCAF2 Antibody (Center) for immunohistochemistry. Clinical relevance has not been evaluated.

### CEM



Flow cytometric analysis of CEM cells using MCAF2 Antibody (Center) (right histogram) compared to a negative control cell (left histogram). FITC-conjugated goat-anti-rabbit secondary antibodies were used for the analysis.