

Product datasheet for **AP52624PU-N**

MBNL3 (Center) Rabbit Polyclonal Antibody

Product data:

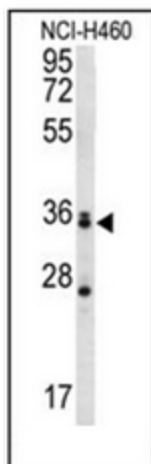
Product Type:	Primary Antibodies
Applications:	WB
Recommended Dilution:	ELISA: 1/1000. Western Blot: 1/100-1/500.
Reactivity:	Human
Host:	Rabbit
Isotype:	Ig
Clonality:	Polyclonal
Immunogen:	conjugated synthetic peptide between 250-280 amino acids from the Central region of human MBNL3
Specificity:	This antibody recognizes Human MBNL3 (Center).
Formulation:	PBS containing 0.09% (W/V) Sodium Azide as preservative State: Aff - Purified State: Liquid purified Ig fraction
Concentration:	lot specific
Purification:	Protein A column, followed by peptide affinity purification
Conjugation:	Unconjugated
Storage:	Store undiluted at 2-8°C for one month or (in aliquots) at -20°C for longer. Avoid repeated freezing and thawing.
Stability:	Shelf life: one year from despatch.
Gene Name:	muscleblind like splicing regulator 3
Database Link:	Entrez Gene 55796 Human Q9NUK0
Background:	This gene encodes a member of the muscleblind-like family of proteins. The encoded protein may function in regulation of alternative splicing and may play a role in the pathophysiology of myotonic dystrophy. Alternatively spliced transcript variants have been described.
Synonyms:	Muscleblind-like protein 3, HCHCR, CHCR, MBLX39, MBXL



[View online »](#)

Note: **Molecular Weight:** 38532 Da

Product images:



Western blot analysis of MBNL3 Antibody (Center) in NCI-H460 cell line lysates (35ug/lane). This demonstrates the MBNL3 antibody detected the MBNL3 protein (arrow).