

## Product datasheet for **AP52623PU-N**

### **MBNL2 (C-term) Rabbit Polyclonal Antibody**

#### **Product data:**

Product Type:	Primary Antibodies
Applications:	FC, IHC, WB
Recommended Dilution:	<b>ELISA:</b> 1/1000. <b>Western Blot:</b> 1/100-1/500. <b>Flow Cytometry:</b> 1/10-1/50. <b>Immunohistochemistry on Paraffin Sections:</b> 1/10-1/50.
Reactivity:	Human
Host:	Rabbit
Isotype:	Ig
Clonality:	Polyclonal
Immunogen:	KLH conjugated synthetic peptide between 260-290 amino acids from the C-terminal region of human MBNL2
Specificity:	This antibody recognizes Human MBNL2 (C-term).
Formulation:	PBS containing 0.09% (W/V) Sodium Azide as preservative State: Aff - Purified State: Liquid purified Ig fraction
Concentration:	lot specific
Purification:	Protein A column, followed by peptide affinity purification
Conjugation:	Unconjugated
Storage:	Store undiluted at 2-8°C for one month or (in aliquots) at -20°C for longer. Avoid repeated freezing and thawing.
Stability:	Shelf life: one year from despatch.
Gene Name:	muscleblind like splicing regulator 2
Database Link:	<a href="#">Entrez Gene 10150 Human</a> <a href="#">Q5VZF2</a>



[View online »](#)

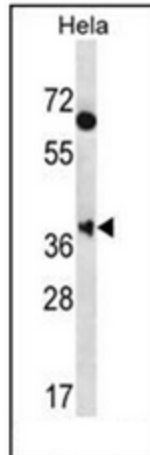
**Background:** This gene encodes a C3H-type zinc finger protein, which is similar to the *Drosophila melanogaster* muscleblind B protein. *Drosophila* muscleblind is a gene required for photoreceptor differentiation. Several alternatively spliced transcript variants have been described but the full-length nature of only some have been determined.

**Synonyms:** MBLL, MBLL39, MLP1, Muscleblind-like protein 1

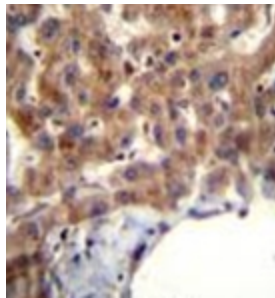
**Note:** **Molecular Weight:** 40518 Da

**Protein Families:** Transcription Factors

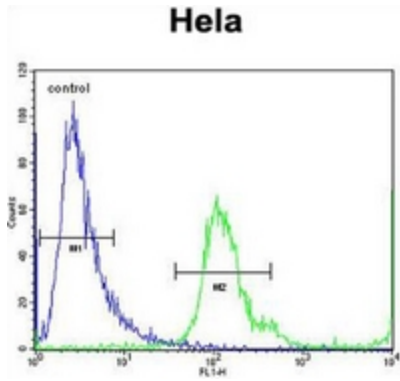
### Product images:



Western blot analysis of MBNL2 Antibody (C-term) in HeLa cell line lysates (35ug/lane). This demonstrates the MBNL2 antibody detected the MBNL2 protein (arrow).



Immunohistochemistry analysis in formalin fixed and paraffin embedded human liver tissue reacted with MBNL2 Antibody (C-term), which was peroxidase conjugated to the secondary antibody and followed by AB staining.



Flow cytometric analysis of HeLa cells using MBNL2 Antibody (C-term) (right histogram) compared to a negative control cell (left histogram). FITC-conjugated goat-anti-rabbit secondary antibodies were used for the analysis.