

Product datasheet for **AP52620PU-N**

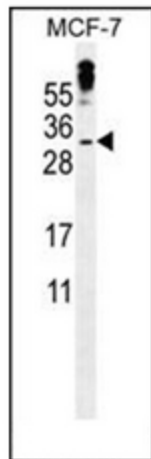
MBD3L3 (C-term) Rabbit Polyclonal Antibody

Product data:

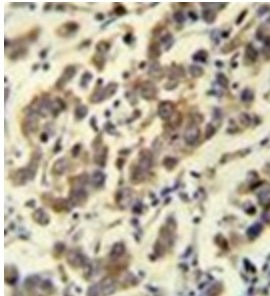
Product Type:	Primary Antibodies
Applications:	FC, IF, IHC, WB
Recommended Dilution:	ELISA: 1/1000. Western Blot: 1/100-1/500. Flow Cytometry: 1/10-1/50. Immunofluorescence: 1/10-1/50. Immunohistochemistry on Paraffin Sections: 1/10-1/50.
Reactivity:	Human
Host:	Rabbit
Isotype:	Ig
Clonality:	Polyclonal
Immunogen:	KLH conjugated synthetic peptide between 163-192 amino acids from the C-terminal region of human MBD3L3
Specificity:	This antibody recognizes Human MBD3L3 (C-term).
Formulation:	PBS containing 0.09% (W/V) Sodium Azide as preservative State: Aff - Purified State: Liquid purified Ig fraction
Concentration:	lot specific
Purification:	Protein A column, followed by peptide affinity purification
Conjugation:	Unconjugated
Storage:	Store undiluted at 2-8°C for one month or (in aliquots) at -20°C for longer. Avoid repeated freezing and thawing.
Stability:	Shelf life: one year from despatch.
Gene Name:	methyl-CpG binding domain protein 3 like 3
Database Link:	Entrez Gene 653657 Human A6NE82
Synonyms:	Putative methyl-CpG-binding domain protein 3-like 3
Note:	Molecular Weight: 23095 Da



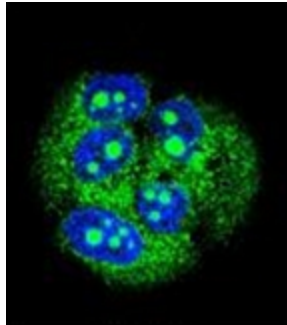
[View online »](#)

Product images:

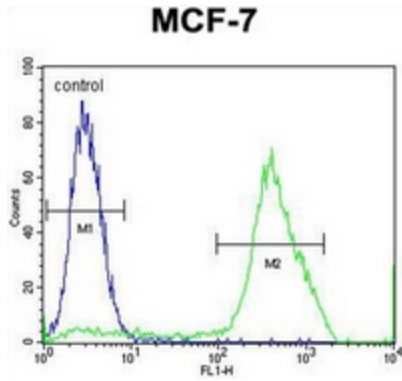
Western blot analysis of MBD3L3 Antibody (C-term) in MCF-7 cell line lysates (35ug/lane). This demonstrates the MBD3L3 antibody detected the MBD3L3 protein (arrow).



Immunohistochemistry analysis in formalin fixed and paraffin embedded human testis carcinoma reacted with MBD3L3 Antibody (C-term), which was peroxidase conjugated to the secondary antibody and followed by DAB staining.



Confocal immunofluorescent analysis of MBD3L3 Antibody (C-term) with MCF-7 cell followed by Alexa Fluor 488-conjugated goat anti-rabbit IgG (green). DAPI was used to stain the cell nuclear (blue).



Flow cytometric analysis of MCF-7 cells using MBD3L3 Antibody (C-term) (right histogram) compared to a negative control cell (left histogram). FITC-conjugated goat-anti-rabbit secondary antibodies were used for the analysis.