

Product datasheet for **AP52619PU-N**

MBD3L2 (C-term) Rabbit Polyclonal Antibody

Product data:

Product Type:	Primary Antibodies
Applications:	WB
Recommended Dilution:	ELISA: 1/1000. Western Blot: 1/100-1/500.
Reactivity:	Human
Host:	Rabbit
Isotype:	Ig
Clonality:	Polyclonal
Immunogen:	KLH conjugated synthetic peptide between 183-204 amino acids from the C-terminal region of human MBD3L2
Specificity:	This antibody recognizes Human MBD3L2 (C-term).
Formulation:	PBS containing 0.09% (W/V) Sodium Azide as preservative State: Aff - Purified State: Liquid purified Ig fraction
Concentration:	lot specific
Purification:	Protein A column, followed by peptide affinity purification
Conjugation:	Unconjugated
Storage:	Store undiluted at 2-8°C for one month or (in aliquots) at -20°C for longer. Avoid repeated freezing and thawing.
Stability:	Shelf life: one year from despatch.
Gene Name:	methyl-CpG binding domain protein 3 like 2
Database Link:	Entrez Gene 125997 Human Q8NHZ7

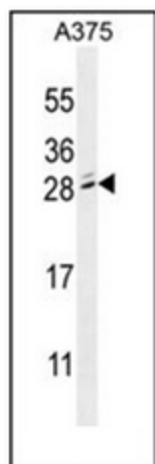


Background: This gene encodes a protein that is related to methyl-CpG-binding proteins but lacks the methyl-CpG binding domain. The protein has been found in germ cell tumors and some somatic tissues.

Synonyms: MBD3L2

Note: **Molecular Weight:** 22695 Da

Product images:



Western blot analysis of MBD3L2 Antibody (C-term) in A375 cell line lysates (35ug/lane). This demonstrates the MBD3L2 antibody detected the MBD3L2 protein (arrow).