

## Product datasheet for **AP52616PU-N**

### Matrilin 3 (MATN3) (Center) Rabbit Polyclonal Antibody

#### Product data:

Product Type:	Primary Antibodies
Applications:	WB
Recommended Dilution:	<b>ELISA:</b> 1/1000. <b>Western Blot:</b> 1/100-1/500.
Reactivity:	Human
Host:	Rabbit
Isotype:	Ig
Clonality:	Polyclonal
Immunogen:	KLH conjugated synthetic peptide between 219-248 amino acids from the Central region of human Matrilin-3
Specificity:	This antibody recognizes Human Matrilin-3 (Center).
Formulation:	PBS containing 0.09% (W/V) Sodium Azide as preservative State: Aff - Purified State: Liquid purified Ig fraction
Concentration:	lot specific
Purification:	Protein A column, followed by peptide affinity purification
Conjugation:	Unconjugated
Storage:	Store undiluted at 2-8°C for one month or (in aliquots) at -20°C for longer. Avoid repeated freezing and thawing.
Stability:	Shelf life: one year from despatch.
Gene Name:	matrilin 3
Database Link:	<a href="#">Entrez Gene 4148 Human O15232</a>



[View online »](#)

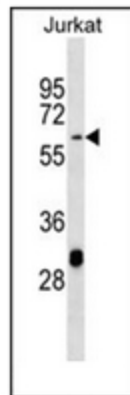
**Background:** This gene encodes a member of von Willebrand factor A domain containing protein family. This family of proteins is thought to be involved in the formation of filamentous networks in the extracellular matrices of various tissues. This protein contains two von Willebrand factor A domains; it is present in the cartilage extracellular matrix and has a role in the development and homeostasis of cartilage and bone. Mutations in this gene result in multiple epiphyseal dysplasia.

**Synonyms:** MATN3

**Note:** **Molecular Weight:** 52817 Da

**Protein Families:** Druggable Genome, Secreted Protein

**Product images:**



Western blot analysis of Matrilin-3 Antibody (Center) in Jurkat cell line lysates (35ug/lane).