

Product datasheet for **AP52615PU-N**

MATN1 (C-term) Rabbit Polyclonal Antibody

Product data:

Product Type:	Primary Antibodies
Applications:	IHC, WB
Recommended Dilution:	ELISA: 1/1000. Western Blot: 1/100-1/500. Immunohistochemistry on Paraffin Sections: 1/10-1/50.
Reactivity:	Human
Host:	Rabbit
Isotype:	Ig
Clonality:	Polyclonal
Immunogen:	KLH conjugated synthetic peptide between 383-413 amino acids from the C-terminal region of human Matrilin-1
Specificity:	This antibody recognizes Human Matrilin-1 (C-term).
Formulation:	PBS containing 0.09% (W/V) Sodium Azide as preservative State: Aff - Purified State: Liquid purified Ig fraction
Concentration:	lot specific
Purification:	Protein A column, followed by peptide affinity purification
Conjugation:	Unconjugated
Storage:	Store undiluted at 2-8°C for one month or (in aliquots) at -20°C for longer. Avoid repeated freezing and thawing.
Stability:	Shelf life: one year from despatch.
Gene Name:	matrilin 1, cartilage matrix protein
Database Link:	Entrez Gene 4146 Human P21941
Background:	This gene encodes a member of von Willebrand factor A domain containing protein family. This family of proteins are thought to be involved in the formation of filamentous networks in the extracellular matrices of various tissues. Mutations of this gene have been associated with variety of inherited chondrodysplasias.

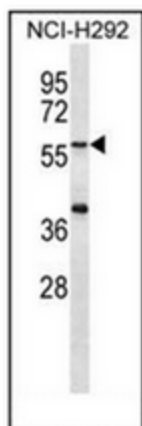


[View online »](#)

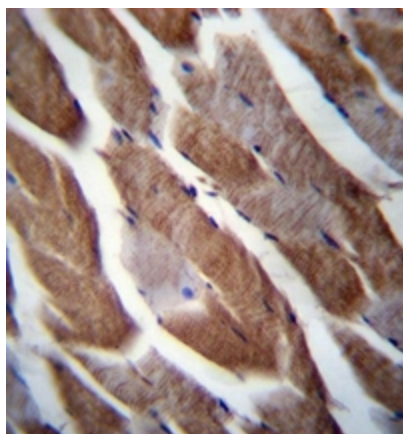
Synonyms: Cartilage matrix protein, MATN1, CMP, CRTM

Note: **Molecular Weight:** 53701 Da

Product images:



Western blot analysis of Matrilin-1 Antibody (C-term) in NCI-H292 cell line lysates (35ug/lane).



Immunohistochemistry analysis in formalin fixed and paraffin embedded human skeletal muscle reacted with Matrilin-1 Antibody (C-term), which was peroxidase conjugated to the secondary antibody and followed by DAB staining.