

## Product datasheet for **AP52608PU-N**

### MARCKS like protein (MARCKSL1) (C-term) Rabbit Polyclonal Antibody

#### Product data:

Product Type:	Primary Antibodies
Applications:	WB
Recommended Dilution:	<b>ELISA:</b> 1/1000. <b>Western Blot:</b> 1/100-1/500.
Reactivity:	Human
Host:	Rabbit
Isotype:	Ig
Clonality:	Polyclonal
Immunogen:	KLH conjugated synthetic peptide between 131-160 amino acids from the C-terminal region of human MARCKSL
Specificity:	This antibody recognizes Human MARCKSL1 (C-term).
Formulation:	PBS containing 0.09% (W/V) Sodium Azide as preservative State: Aff - Purified State: Liquid purified Ig fraction
Concentration:	lot specific
Purification:	Protein A column, followed by peptide affinity purification
Conjugation:	Unconjugated
Storage:	Store undiluted at 2-8°C for one month or (in aliquots) at -20°C for longer. Avoid repeated freezing and thawing.
Stability:	Shelf life: one year from despatch.
Gene Name:	MARCKS-like 1
Database Link:	<a href="#">Entrez Gene 65108 Human P49006</a>
Background:	MARCKSL1 may be involved in coupling the protein kinase C and calmodulin signal transduction systems.
Synonyms:	MARCKS-related protein, Macrophage myristoylated alanine-rich C kinase substrate, MARCKSL1, MLP, MRP

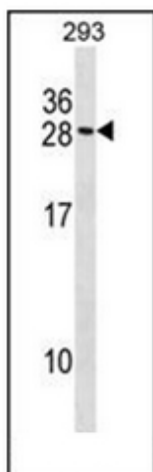


[View online »](#)

Note: **Molecular Weight:** 19529 Da

Protein Pathways: Fc gamma R-mediated phagocytosis

**Product images:**



Western blot analysis of MARCKSL1 Antibody (C-term) in 293 cell line lysates (35ug/lane). This demonstrates the MARCKSL1 antibody detected the MARCKSL1 protein (arrow)