

Product datasheet for **AP52606PU-N**

EB2 (MAPRE2) (N-term) Rabbit Polyclonal Antibody

Product data:

Product Type:	Primary Antibodies
Applications:	WB
Recommended Dilution:	ELISA: 1/1000. Western Blot: 1/100-1/500.
Reactivity:	Human
Host:	Rabbit
Isotype:	Ig
Clonality:	Polyclonal
Immunogen:	KLH conjugated synthetic peptide between 11-40 amino acids from the N-terminal region of human MAPRE2
Specificity:	This antibody recognizes Human MAPRE2 (N-term).
Formulation:	PBS containing 0.09% (W/V) Sodium Azide as preservative State: Aff - Purified State: Liquid purified Ig fraction
Concentration:	lot specific
Purification:	Protein A column, followed by peptide affinity purification
Conjugation:	Unconjugated
Storage:	Store undiluted at 2-8°C for one month or (in aliquots) at -20°C for longer. Avoid repeated freezing and thawing.
Stability:	Shelf life: one year from despatch.
Gene Name:	microtubule associated protein RP/EB family member 2
Database Link:	Entrez Gene 10982 Human Q15555



[View online »](#)

Background:

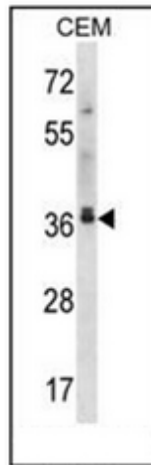
The protein encoded by this gene shares significant homology to the adenomatous polyposis coli (APC) protein-binding EB1 gene family. The function of this protein is unknown; however, its homology suggests involvement in tumorigenesis of colorectal cancers and proliferative control of normal cells. This gene may belong to the intermediate/early gene family, involved in the signal transduction cascade downstream of the TCR. Alternative splicing results in multiple transcript variants. [provided by RefSeq].

Synonyms:

APC-binding protein EB2, End-binding protein 2

Note:

Molecular Weight: 37031 Da

Product images:

Western blot analysis of MAPRE2 Antibody (N-term) in CEM cell line lysates (35ug/lane). This demonstrates the MAPRE2 antibody detected the MAPRE2 protein (arrow).