

Product datasheet for **AP52604PU-N**

MAPK1IPIL (Center) Rabbit Polyclonal Antibody

Product data:

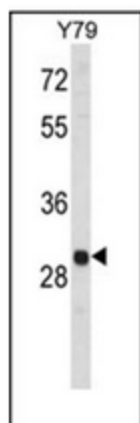
Product Type:	Primary Antibodies
Applications:	IHC, WB
Recommended Dilution:	ELISA: 1/1000. Western Blot: 1/100-1/500. Immunohistochemistry on Paraffin Sections: 1/50-1/100.
Reactivity:	Human
Host:	Rabbit
Isotype:	Ig
Clonality:	Polyclonal
Immunogen:	KLH conjugated synthetic peptide between 115~145 amino acids from the C-terminal region of human MAPK1IPIL
Specificity:	This antibody recognizes Human MAPK1IPIL (Center).
Formulation:	PBS containing 0.09% (W/V) Sodium Azide as preservative State: Aff - Purified State: Liquid purified Ig fraction
Concentration:	lot specific
Purification:	Protein A column, followed by peptide affinity purification
Conjugation:	Unconjugated
Storage:	Store undiluted at 2-8°C for one month or (in aliquots) at -20°C for longer. Avoid repeated freezing and thawing.
Stability:	Shelf life: one year from despatch.
Gene Name:	mitogen-activated protein kinase 1 interacting protein 1-like
Database Link:	Entrez Gene 93487 Human Q8NDC0



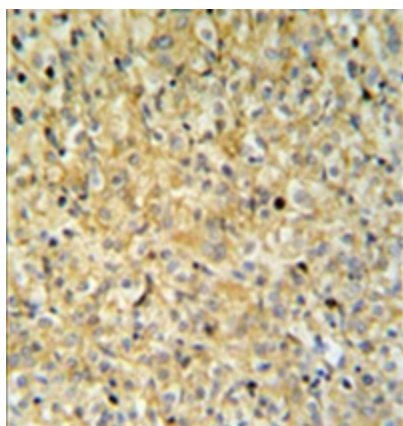
Synonyms: C14orf32, Mitogen-activated protein kinase 1-interacting protein 1-like

Note: **Molecular Weight:** 24269 Da

Product images:



Western blot analysis of Mrified Pab.



Immunohistochemistry analysis in formalin fixed and paraffin embedded kidney carcinoma reacted with MAPK1IP1L Antibody (Center), which was peroxidase conjugated to the secondary antibody and followed by DAB staining. This data demonstrates the use of the MAPK1IP1L Antibody (Center) for. Clinical relevance has not been evaluated.