

Product datasheet for **AP52600PU-N**

Germinal Center Kinase (MAP4K2) (Center) Rabbit Polyclonal Antibody

Product data:

Product Type:	Primary Antibodies
Applications:	FC, WB
Recommended Dilution:	ELISA: 1/1000. Western Blot: 1/100-1/500. Flow Cytometry: 1/10-1/50.
Reactivity:	Human
Host:	Rabbit
Isotype:	Ig
Clonality:	Polyclonal
Immunogen:	KLH conjugated synthetic peptide between 320-349 amino acids from the Central region of human MAP4K2
Specificity:	This antibody recognizes Human MAP4K2 (Center).
Formulation:	PBS containing 0.09% (W/V) Sodium Azide as preservative State: Aff - Purified State: Liquid purified Ig fraction
Concentration:	lot specific
Purification:	Protein A column, followed by peptide affinity purification
Conjugation:	Unconjugated
Storage:	Store undiluted at 2-8°C for one month or (in aliquots) at -20°C for longer. Avoid repeated freezing and thawing.
Stability:	Shelf life: one year from despatch.
Gene Name:	mitogen-activated protein kinase kinase kinase kinase 2
Database Link:	Entrez Gene 5871 Human Q12851



[View online »](#)

Background:

The protein encoded by this gene is a member of the serine/threonine protein kinase family. Although this kinase is found in many tissues, its expression in lymphoid follicles is restricted to the cells of germinal centre, where it may participate in B-cell differentiation. This kinase can be activated by TNF-alpha, and has been shown to specifically activate MAP kinases. This kinase is also found to interact with TNF receptor-associated factor 2 (TRAF2), which is involved in the activation of MAP3K1/MEKK1.

Synonyms:

MAPK, MEK kinase kinase 2, MEKKK 2, RAB8IP

Note:

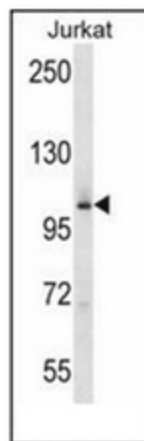
Molecular Weight: 91556 Da

Protein Families:

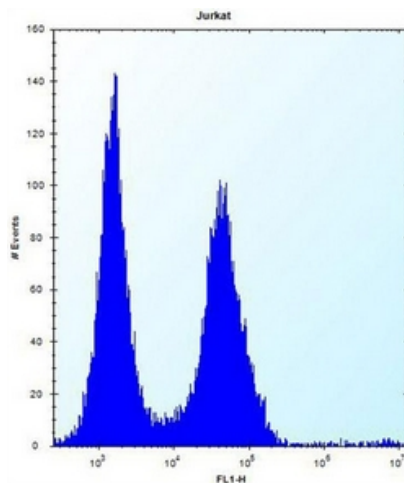
Druggable Genome, Protein Kinase

Protein Pathways:

MAPK signaling pathway

Product images:

Western blot analysis of MAP4K2 Antibody (Center) in Jurkat cell line lysates (35ug/lane). This demonstrates the MAP4K2 antibody detected the MAP4K2 protein (arrow).



Flow cytometric analysis of Jurkat cells using MAP4K2 Antibody (Center) (right histogram) compared to a negative control cell (left histogram). FITC-conjugated donkey-anti-rabbit secondary antibodies were used for the analysis.