

Product datasheet for **AP52597PU-N**

MAP1D (METAP1D) (N-term) Rabbit Polyclonal Antibody

Product data:

Product Type:	Primary Antibodies
Applications:	WB
Recommended Dilution:	ELISA: 1/1000. Western Blot: 1/100-1/500.
Reactivity:	Human, Mouse
Host:	Rabbit
Isotype:	Ig
Clonality:	Polyclonal
Immunogen:	KLH conjugated synthetic peptide between 309-335 amino acids from the N-terminal region of Human Methionine aminopeptidase 1D
Specificity:	This antibody recognizes Human and Mouse Methionine aminopeptidase 1D (N-term).
Formulation:	PBS containing 0.09% (W/V) Sodium Azide as preservative State: Aff - Purified State: Liquid purified Ig fraction
Concentration:	lot specific
Purification:	Protein A column, followed by peptide affinity purification
Conjugation:	Unconjugated
Storage:	Store undiluted at 2-8°C for one month or (in aliquots) at -20°C for longer. Avoid repeated freezing and thawing.
Stability:	Shelf life: one year from despatch.
Gene Name:	methionyl aminopeptidase type 1D (mitochondrial)
Database Link:	Entrez Gene 254042 Human Q6UB28
Background:	The N-terminal methionine excision pathway is an essential process in which the N-terminal methionine is removed from many proteins, thus facilitating subsequent protein modification. In mitochondria, enzymes that catalyze this reaction are called methionine aminopeptidases (MetAps, or MAPs; EC 3.4.11.18) (Serero et al., 2003 [PubMed 14532271]).
Synonyms:	2310066F24Rik; 3110033D18Rik; AV117938; Map1d; Metap1

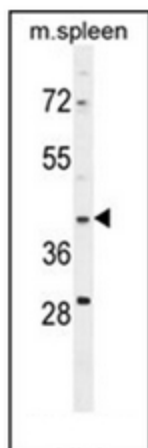


[View online »](#)

Note: **Molecular Weight:** 37088 Da

Protein Families: Druggable Genome

Product images:



Western blot analysis of Methionine aminopeptidase 1D Antibody in mouse spleen cell line lysates (35ug/lane).