

## Product datasheet for **AP52594PU-N**

### MAN2A2 (Center) Rabbit Polyclonal Antibody

#### Product data:

Product Type:	Primary Antibodies
Applications:	FC, IHC, WB
Recommended Dilution:	<b>ELISA:</b> 1/1000. <b>Western Blot:</b> 1/100-1/500. <b>Flow Cytometry:</b> 1/10-1/50. <b>Immunohistochemistry on Paraffin Sections:</b> 1/10-1/50.
Reactivity:	Human, Mouse
Host:	Rabbit
Isotype:	Ig
Clonality:	Polyclonal
Immunogen:	KLH conjugated synthetic peptide between 766-796 amino acids from the Central region of human MAN2A2
Specificity:	This antibody recognizes Human and Mouse MAN2A2 (Center).
Formulation:	PBS containing 0.09% (W/V) Sodium Azide as preservative State: Aff - Purified State: Liquid purified Ig fraction
Concentration:	lot specific
Purification:	Protein A column, followed by peptide affinity purification
Conjugation:	Unconjugated
Storage:	Store undiluted at 2-8°C for one month or (in aliquots) at -20°C for longer. Avoid repeated freezing and thawing.
Stability:	Shelf life: one year from despatch.
Gene Name:	mannosidase alpha class 2A member 2
Database Link:	<a href="#">Entrez Gene 140481 Mouse</a> <a href="#">Entrez Gene 4122 Human P49641</a>
Background:	MAN2A2 catalyzes the first committed step in the biosynthesis of complex N-glycans. It controls conversion of high mannose to complex N-glycans; the final hydrolytic step in the N-glycan maturation pathway.



[View online »](#)

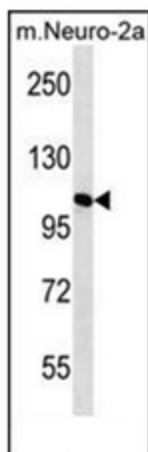
**Synonyms:** Alpha-mannosidase 2x, Mana2x, Alpha-mannosidase IIx, Man IIx, Mannosidase alpha class 2A member 2, Mannosyl-oligosaccharide 1,3-1,6-alpha-mannosidase

**Note:** **Molecular Weight:** 129282 Da

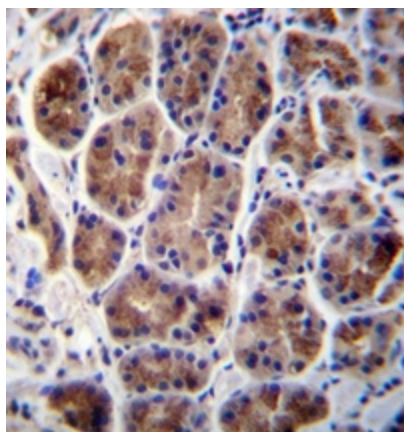
**Protein Families:** Druggable Genome, Transmembrane

**Protein Pathways:** Metabolic pathways, N-Glycan biosynthesis

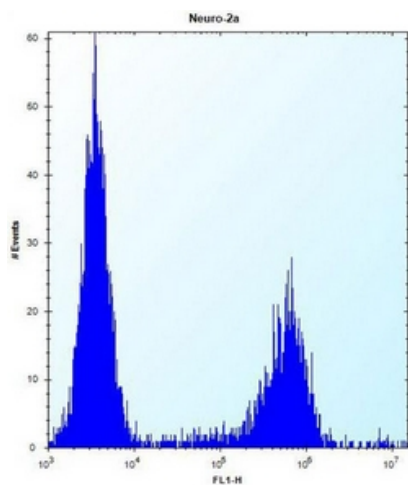
**Product images:**



Western blot analysis of MAN2A2 Antibody (Center) in mouse Neuro-2a cell line lysates (35ug/lane). This demonstrates the MAN2A2 antibody detected the MAN2A2 protein (arrow).



Immunohistochemistry analysis in formalin fixed and paraffin embedded human stomach tissue reacted with MAN2A2 Antibody (Center), which was peroxidase conjugated to the secondary antibody and followed by DAB staining.



Flow cytometric analysis of Neuro-2a cells using MAN2A2 Antibody (Center) (right histogram) compared to a negative control cell (left histogram). FITC-conjugated donkey-anti-rabbit secondary antibodies were used for the analysis.