

Product datasheet for **AP52593PU-N**

Mannosidase II (MAN2A1) (Center) Rabbit Polyclonal Antibody

Product data:

Product Type:	Primary Antibodies
Applications:	FC, WB
Recommended Dilution:	ELISA: 1/1000. Western Blot: 1/100-1/500. Flow Cytometry: 1/10-1/50.
Reactivity:	Human
Host:	Rabbit
Isotype:	Ig
Clonality:	Polyclonal
Immunogen:	KLH conjugated synthetic peptide between 456-482 amino acids from the Central region of human Alpha-Mannosidase 2 / MAN2A1
Specificity:	This antibody recognizes Human Alpha-Mannosidase-2 / MAN2A1 (Center).
Formulation:	PBS containing 0.09% (W/V) Sodium Azide as preservative State: Aff - Purified State: Liquid purified Ig fraction
Concentration:	lot specific
Purification:	Protein A column, followed by peptide affinity purification
Conjugation:	Unconjugated
Storage:	Store undiluted at 2-8°C for one month or (in aliquots) at -20°C for longer. Avoid repeated freezing and thawing.
Stability:	Shelf life: one year from despatch.
Gene Name:	mannosidase alpha class 2A member 1
Database Link:	Entrez Gene 4124 Human Q16706



[View online »](#)

Background:

This gene encodes a protein which is a member of family 38 of the glycosyl hydrolases. The protein is located in the Golgi and catalyzes the final hydrolytic step in the asparagine-linked oligosaccharide (N-glycan) maturation pathway. Mutations in the mouse homolog of this gene have been shown to cause a systemic autoimmune disease similar to human systemic lupus erythematosus.

Synonyms:

Alpha-mannosidase II, MANA2, Mannosidase 2

Note:

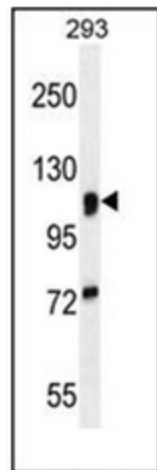
Molecular Weight: 131141 Da

Protein Families:

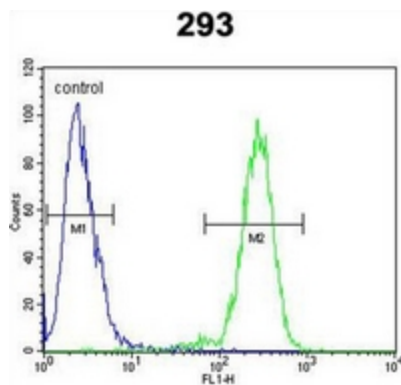
Druggable Genome, Transmembrane

Protein Pathways:

Metabolic pathways, N-Glycan biosynthesis

Product images:

Western blot analysis of Alpha-Mannosidase 2 / MAN2A1 Antibody (Center) in 293 cell line lysates (35ug/lane). This demonstrates the MAN2A1 antibody detected the MAN2A1 protein (arrow).



Flow cytometric analysis of 293 cells using Alpha-Mannosidase 2 / MAN2A1 Antibody (Center) (right histogram) compared to a negative control cell (left histogram). FITC-conjugated goat-anti-rabbit secondary antibodies were used for the analysis.