

## Product datasheet for **AP52592PU-N**

### **MAMSTR (N-term) Rabbit Polyclonal Antibody**

#### **Product data:**

Product Type:	Primary Antibodies
Applications:	FC, IHC, WB
Recommended Dilution:	<b>ELISA:</b> 1/1000. <b>Western Blot:</b> 1/100-1/500. <b>Flow Cytometry:</b> 1/10-1/50. <b>Immunohistochemistry on Paraffin Sections:</b> 1/50-1/100.
Reactivity:	Human
Host:	Rabbit
Isotype:	Ig
Clonality:	Polyclonal
Immunogen:	KLH conjugated synthetic peptide between 16-45 amino acids from the N-terminal region of human MAMSTR
Specificity:	This antibody recognizes Human MAMSTR (N-term).
Formulation:	PBS containing 0.09% (W/V) Sodium Azide as preservative State: Aff - Purified State: Liquid purified Ig fraction
Concentration:	lot specific
Purification:	Protein A column, followed by peptide affinity purification
Conjugation:	Unconjugated
Storage:	Store undiluted at 2-8°C for one month or (in aliquots) at -20°C for longer. Avoid repeated freezing and thawing.
Stability:	Shelf life: one year from despatch.
Gene Name:	MEF2 activating motif and SAP domain containing transcriptional regulator
Database Link:	<a href="#">Entrez Gene 284358 Human Q6ZN01</a>
Background:	Transcriptional coactivator. Stimulates the transcriptional activity of MEF2C. Stimulates MYOD1 activity in part via MEF2, resulting in an enhancement of skeletal muscle differentiation (By similarity).

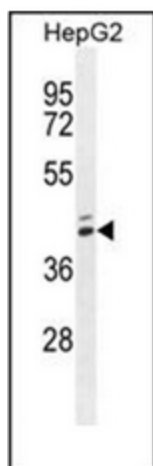


[View online »](#)

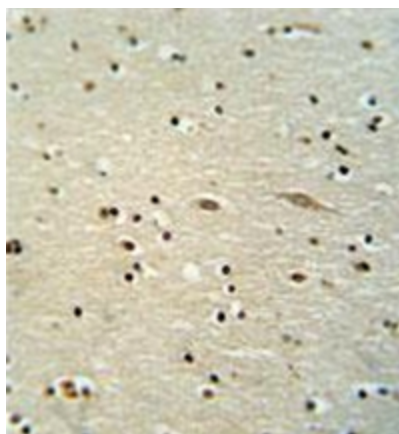
**Synonyms:** MASTR

**Note:** **Molecular Weight:** 44632 Da

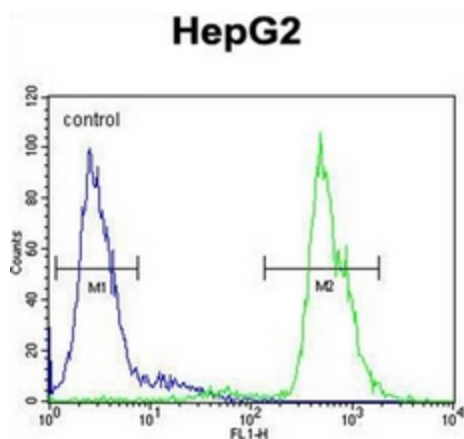
**Product images:**



Western blot analysis of MAMSTR Antibody (N-term) in HepG2 cell line lysates (35ug/lane). This demonstrates the MAMSTR antibody detected the MAMSTR protein (arrow).



Immunohistochemistry analysis in formalin fixed and paraffin embedded human brain tissue reacted with MAMSTR Antibody (N-term), which was peroxidase conjugated to the secondary antibody and followed by DAB staining.



Flow cytometric analysis of HepG2 cells using MAMSTR Antibody (N-term) (right histogram) compared to a negative control cell (left histogram). FITC-conjugated goat-anti-rabbit secondary antibodies were used for the analysis.