

Product datasheet for **AP52590PU-N**

MARVELD2 (C-term) Rabbit Polyclonal Antibody

Product data:

Product Type:	Primary Antibodies
Applications:	IHC, WB
Recommended Dilution:	ELISA: 1/1000. Western Blot: 1/100-1/500. Immunohistochemistry on Paraffin Sections: 1/50-1/100.
Reactivity:	Human
Host:	Rabbit
Isotype:	Ig
Clonality:	Polyclonal
Immunogen:	KLH conjugated synthetic peptide between 393~423 amino acids from the C-terminal region of human Tricellulin
Specificity:	This antibody recognizes Human Tricellulin (C-term).
Formulation:	PBS containing 0.09% (W/V) Sodium Azide as preservative State: Aff - Purified State: Liquid purified Ig fraction
Concentration:	lot specific
Purification:	Protein A column, followed by peptide affinity purification
Conjugation:	Unconjugated
Storage:	Store undiluted at 2-8°C for one month or (in aliquots) at -20°C for longer. Avoid repeated freezing and thawing.
Stability:	Shelf life: one year from despatch.
Gene Name:	MARVEL domain containing 2
Database Link:	Entrez Gene 153562 Human Q8N4S9
Background:	Tricellulin plays a role in the formation of the epithelial barriers. The separation of the endolymphatic and perilymphatic spaces of the organ of Corti from one another by epithelial barriers is required for normal hearing
Synonyms:	MARVEL domain-containing protein 2, TRIC, MARVELD2

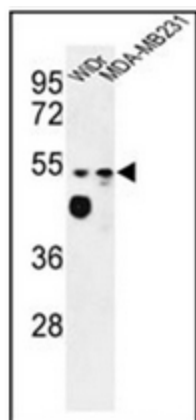


[View online »](#)

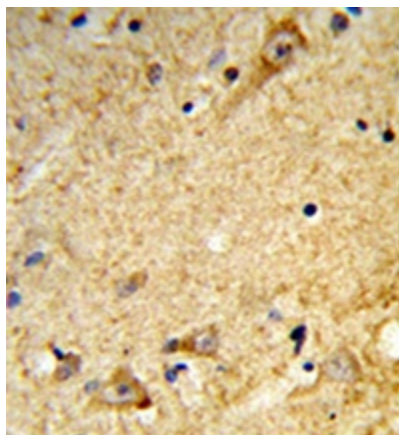
Note: **Molecular Weight:** 64180 Da

Protein Families: Transmembrane

Product images:



Western blot analysis of Tricellulin Antibody (C-term) in WiDr, MDA-MB231 cell line lysates (35ug/lane).



Immunohistochemistry analysis in formalin-fixed and paraffin-embedded human brain tissue reacted with Tricellulin Antibody (C-term), which was peroxidase-conjugated to the secondary antibody, followed by DAB staining.