

Product datasheet for **AP52586PU-N**

MAGEB10 (Center) Rabbit Polyclonal Antibody

Product data:

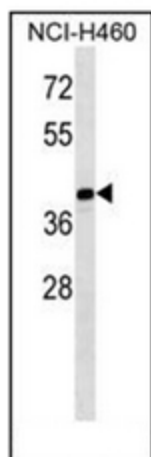
Product Type:	Primary Antibodies
Applications:	WB
Recommended Dilution:	ELISA: 1/1000. Western Blot: 1/100-1/500.
Reactivity:	Human
Host:	Rabbit
Isotype:	Ig
Clonality:	Polyclonal
Immunogen:	KLH conjugated synthetic peptide between 87-116 amino acids from the Central region of human MAGE-B10
Specificity:	This antibody recognizes Human MAGE-B10 (Center).
Formulation:	PBS containing 0.09% (W/V) Sodium Azide as preservative State: Aff - Purified State: Liquid purified Ig fraction
Concentration:	lot specific
Purification:	Protein A column, followed by peptide affinity purification
Conjugation:	Unconjugated
Storage:	Store undiluted at 2-8°C for one month or (in aliquots) at -20°C for longer. Avoid repeated freezing and thawing.
Stability:	Shelf life: one year from despatch.
Gene Name:	MAGE family member B10
Database Link:	Entrez Gene 139422 Human Q96LZ2
Background:	This gene encodes a member of the B subfamily of the melanoma associated antigen protein family. The encoded protein is specifically expressed in testis and tumor cells. [provided by RefSeq].
Synonyms:	Melanoma-associated antigen B10, MAGEB10



[View online »](#)

Note: **Molecular Weight:** 38971 Da

Product images:



Western blot analysis of MAGE-B10 Antibody (Center) in NCI-H460 cell line lysates (35ug/lane). This demonstrates the MAGEB10 antibody detected the MAGEB10 protein (arrow).