

## Product datasheet for **AP52584PU-N**

### MAFA (C-term) Rabbit Polyclonal Antibody

#### Product data:

|                       |  |
|-----------------------|--|
| Product Type:         | Primary Antibodies   |
| Applications:         | WB   |
| Recommended Dilution: | <b>ELISA:</b> 1/1000.<br><b>Western Blot:</b> 1/100-1/500.   |
| Reactivity:           | Human  |
| Host:                 | Rabbit   |
| Isotype:              | Ig   |
| Clonality:            | Polyclonal   |
| Immunogen:            | KLH conjugated synthetic peptide between 288~318 amino acids from the C-terminal region of human MAFA  |
| Specificity:          | This antibody recognizes Human MAFA (C-term).  |
| Formulation:          | PBS containing 0.09% (W/V) Sodium Azide as preservative<br>State: Purified<br>State: Liquid purified Ig fraction   |
| Concentration:        | lot specific   |
| Purification:         | Saturated Ammonium Sulfate (SAS) precipitation followed by dialysis against PBS  |
| Conjugation:          | Unconjugated   |
| Storage:              | Store undiluted at 2-8°C for one month or (in aliquots) at -20°C for longer.<br>Avoid repeated freezing and thawing.                                       |
| Stability:            | Shelf life: one year from despatch.  |
| Gene Name:            | MAF bZIP transcription factor A  |
| Database Link:        | <a href="#">Entrez Gene 389692 Human Q8NHW3</a>  |
| Background:           | MAFA is a transcription factor that binds RIPE3b, a conserved enhancer element that regulates pancreatic beta cell-specific expression of the insulin gene |
| Synonyms:             | Transcription factor MafA  |
| Note:                 | <b>Molecular Weight:</b> 36845 Da  |

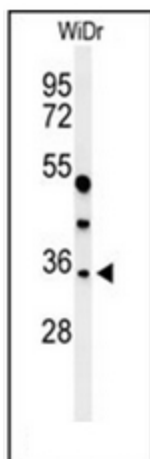


[View online »](#)

Protein Families: Druggable Genome, ES Cell Differentiation/IPS

Protein Pathways: Maturity onset diabetes of the young, Type II diabetes mellitus

**Product images:**



Western blot analysis of MAFA Antibody (C-term) in WiDr cell line lysates (35ug/lane). MAFA (arrow) was detected using the purified Pab.