

## Product datasheet for **AP52583PU-N**

### MAFA (C-term) Rabbit Polyclonal Antibody

#### Product data:

Product Type:	Primary Antibodies
Applications:	WB
Recommended Dilution:	<b>ELISA:</b> 1/1000. <b>Western Blot:</b> 1/100-1/500.
Reactivity:	Human
Host:	Rabbit
Isotype:	Ig
Clonality:	Polyclonal
Immunogen:	KLH conjugated synthetic peptide between 285-315 amino acids from the C-terminal region of human MAFA
Specificity:	This antibody recognizes Human MAFA (C-term).
Formulation:	PBS containing 0.09% (W/V) Sodium Azide as preservative State: Aff - Purified State: Liquid purified Ig fraction
Concentration:	lot specific
Purification:	Protein A column, followed by peptide affinity purification
Conjugation:	Unconjugated
Storage:	Store undiluted at 2-8°C for one month or (in aliquots) at -20°C for longer. Avoid repeated freezing and thawing.
Stability:	Shelf life: one year from despatch.
Gene Name:	MAF bZIP transcription factor A
Database Link:	<a href="#">Entrez Gene 389692 Human Q8NHW3</a>
Background:	MAFA is a transcription factor that binds RIPE3b, a conserved enhancer element that regulates pancreatic beta cell-specific expression of the insulin gene (INS; MIM 176730) (Olbrot et al., 2002 [PubMed 12011435]).
Synonyms:	Transcription factor MafA



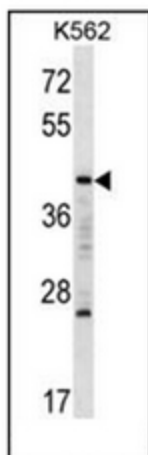
[View online »](#)

**Note:** **Molecular Weight:** 36982 Da

**Protein Families:** Druggable Genome, ES Cell Differentiation/IPS

**Protein Pathways:** Maturity onset diabetes of the young, Type II diabetes mellitus

**Product images:**



Western blot analysis of MAFA Antibody (C-term) in K562 cell line lysates (35ug/lane). This demonstrates the MAFA antibody detected the MAFA protein (arrow).