

Product datasheet for **AP52582PU-N**

MAFA (Center) Rabbit Polyclonal Antibody

Product data:

Product Type:	Primary Antibodies
Applications:	WB
Recommended Dilution:	ELISA: 1/1000. Western Blot: 1/100-1/500.
Reactivity:	Human, Mouse
Host:	Rabbit
Isotype:	Ig
Clonality:	Polyclonal
Immunogen:	KLH conjugated synthetic peptide between 209~238 amino acids from the Central region of Human MAFA.
Specificity:	This antibody recognizes Human and Mouse MAFA (Center).
Formulation:	PBS containing 0.09% (W/V) Sodium Azide as preservative State: Purified State: Liquid purified Ig fraction
Concentration:	lot specific
Purification:	Saturated Ammonium Sulfate (SAS) precipitation followed by dialysis against PBS
Conjugation:	Unconjugated
Storage:	Store undiluted at 2-8°C for one month or (in aliquots) at -20°C for longer. Avoid repeated freezing and thawing.
Stability:	Shelf life: one year from despatch.
Gene Name:	MAF bZIP transcription factor A
Database Link:	Entrez Gene 378435 Mouse Entrez Gene 389692 Human Q8NHW3
Background:	MAFA is a transcription factor that binds RIPE3b, a conserved enhancer element that regulates pancreatic beta cell-specific expression of the insulin gene.
Synonyms:	Transcription factor MafA
Note:	Molecular Weight: 36845 Da

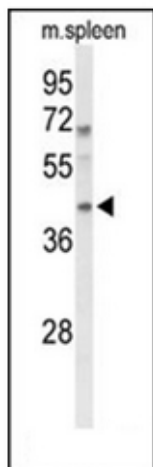


[View online »](#)

Protein Families: Druggable Genome, ES Cell Differentiation/IPS

Protein Pathways: Maturity onset diabetes of the young, Type II diabetes mellitus

Product images:



Western blot analysis of MAFA Antibody (Center) in mouse spleen tissue lysates (35ug/lane). MAFA (arrow) was detected using the purified Pab.