

Product datasheet for **AP52581PU-N**

MAF1 (Center) Rabbit Polyclonal Antibody

Product data:

Product Type:	Primary Antibodies
Applications:	FC, IHC, WB
Recommended Dilution:	ELISA: 1/1000. Western Blot: 1/100-1/500. Flow Cytometry: 1/10-1/50. Immunohistochemistry on Paraffin Sections: 1/50-1/100.
Reactivity:	Human, Mouse
Host:	Rabbit
Isotype:	Ig
Clonality:	Polyclonal
Immunogen:	KLH conjugated synthetic peptide between 97-125 amino acids from the Central region of human MAF1
Specificity:	This antibody recognizes Human and Mouse MAF1 (Center).
Formulation:	PBS containing 0.09% (W/V) Sodium Azide as preservative State: Aff - Purified State: Liquid purified Ig fraction
Concentration:	lot specific
Purification:	Protein A column, followed by peptide affinity purification
Conjugation:	Unconjugated
Storage:	Store undiluted at 2-8°C for one month or (in aliquots) at -20°C for longer. Avoid repeated freezing and thawing.
Stability:	Shelf life: one year from despatch.
Gene Name:	MAF1 homolog, negative regulator of RNA polymerase III
Database Link:	Entrez Gene 84232 Human Q9H063



[View online »](#)

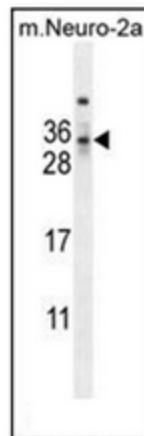
Background: This gene encodes a protein that is similar to Maf1, a *Saccharomyces cerevisiae* protein highly conserved in eukaryotic cells. Yeast Maf1 is a negative effector of RNA polymerase III (Pol III). It responds to changes in the cellular environment and represses pol III transcription. Biochemical studies identified the initiation factor TFIIIB as a target for Maf1-dependent repression.

Synonyms: Repressor of RNA polymerase III transcription MAF1 homolog

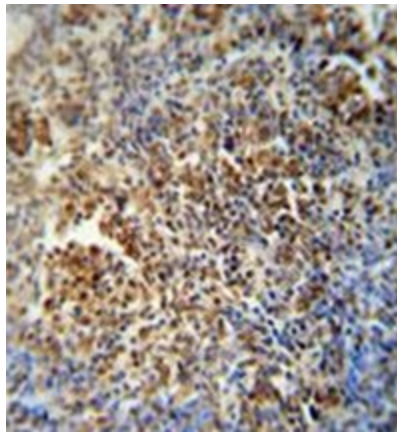
Note: **Molecular Weight:** 28771 Da

Protein Families: Transcription Factors

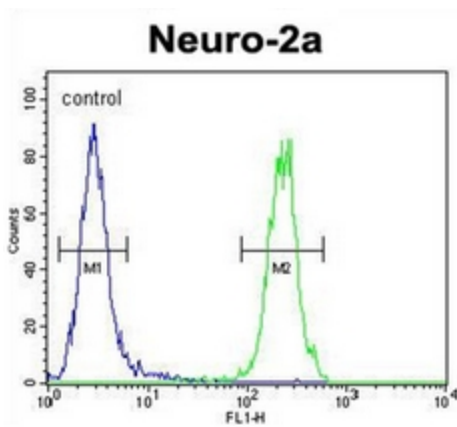
Product images:



Western blot analysis of MAF1 Antibody (Center) in mouse Neuro-2a cell line lysates (35ug/lane). This demonstrates the MAF1 antibody detected the MAF1 protein (arrow).



Immunohistochemistry analysis in formalin fixed and paraffin embedded human lung carcinoma reacted with MAF1 Antibody (Center), which was peroxidase conjugated to the secondary antibody and followed by DAB staining.



Flow cytometric analysis of Neuro-2a cells using MAF1 Antibody (Center) (right histogram) compared to a negative control cell (left histogram). FITC-conjugated goat-anti-rabbit secondary antibodies were used for the analysis