

## Product datasheet for **AP52580PU-N**

### **MAD2L1 binding protein (MAD2L1BP) (N-term) Rabbit Polyclonal Antibody**

#### **Product data:**

Product Type:	Primary Antibodies
Applications:	WB
Recommended Dilution:	<b>ELISA:</b> 1/1000. <b>Western Blot:</b> 1/100-1/500.
Reactivity:	Human
Host:	Rabbit
Isotype:	Ig
Clonality:	Polyclonal
Immunogen:	KLH conjugated synthetic peptide between 1-30 amino acids from the N-terminal region of Human MAD2L1-binding protein
Specificity:	This antibody recognizes Human MAD2L1-binding protein (N-term).
Formulation:	PBS containing 0.09% (W/V) Sodium Azide as preservative State: Aff - Purified State: Liquid purified Ig fraction
Concentration:	lot specific
Purification:	Protein A column, followed by peptide affinity purification
Conjugation:	Unconjugated
Storage:	Store undiluted at 2-8°C for one month or (in aliquots) at -20°C for longer. Avoid repeated freezing and thawing.
Stability:	Shelf life: one year from despatch.
Gene Name:	MAD2L1 binding protein
Database Link:	<a href="#">Entrez Gene 9587 Human Q15013</a>



[View online »](#)

**Background:**

The protein encoded by this gene was identified as a binding protein of the MAD2 mitotic arrest deficient-like 1 (MAD2/MAD2L1). MAD2 is a key component of the spindle checkpoint that delays the onset of anaphase until all the kinetochores are attached to the spindle. This protein may interact with the spindle checkpoint and coordinate cell cycle events in late mitosis. Alternatively spliced transcript variants encoding distinct isoforms have been observed.

**Synonyms:**

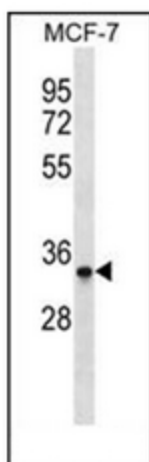
MAD2L1BP, CMT2

**Note:**

**Molecular Weight:** 31052 Da

**Protein Families:**

Druggable Genome

**Product images:**

Western blot analysis of MAD2L1BP Antibody (N-term) in MCF-7 cell line lysates (35ug/lane). This demonstrates the MAD2L1BP antibody detected the MAD2L1BP protein (arrow).