

Product datasheet for **AP52579PU-N**

MAD1 (MAD1L1) (N-term) Rabbit Polyclonal Antibody

Product data:

Product Type:	Primary Antibodies
Applications:	WB
Recommended Dilution:	ELISA: 1/1000. Western Blot: 1/100-1/500.
Reactivity:	Human
Host:	Rabbit
Isotype:	Ig
Clonality:	Polyclonal
Immunogen:	KLH conjugated synthetic peptide between 131-159 amino acids from the N-terminal region of human MAD1L1
Specificity:	This antibody recognizes Human MAD1L1 (N-term).
Formulation:	PBS containing 0.09% (W/V) Sodium Azide as preservative State: Aff - Purified State: Liquid purified Ig fraction
Concentration:	lot specific
Purification:	Protein A column, followed by peptide affinity purification
Conjugation:	Unconjugated
Storage:	Store undiluted at 2-8°C for one month or (in aliquots) at -20°C for longer. Avoid repeated freezing and thawing.
Stability:	Shelf life: one year from despatch.
Gene Name:	MAD1 mitotic arrest deficient like 1
Database Link:	Entrez Gene 8379 Human Q9Y6D9
Background:	MAD1L1 is a component of the mitotic spindle-assembly checkpoint that prevents the onset of anaphase until all chromosome are properly aligned at the metaphase plate. MAD1L1 functions as a homodimer and interacts with MAD2L1. MAD1L1 may play a role in cell cycle control and tumor suppression. Three transcript variants encoding the same protein have been found for this gene. [provided by RefSeq].



[View online »](#)

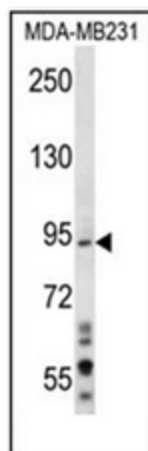
Synonyms: Mitotic spindle assembly checkpoint protein MAD1, MAD1-like 1

Note: **Molecular Weight:** 83067 Da

Protein Families: Druggable Genome

Protein Pathways: Cell cycle

Product images:



Western blot analysis of MAD1L1 Antibody (N-term) in MDA-MB231 cell line lysates (35ug/lane). This demonstrates the MAD1L1 antibody detected the MAD1L1 protein (arrow).